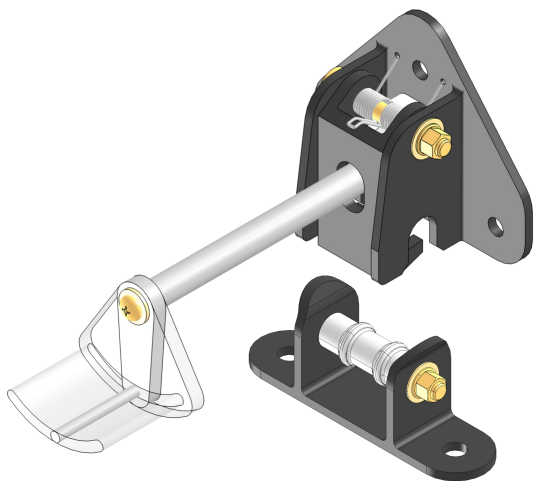
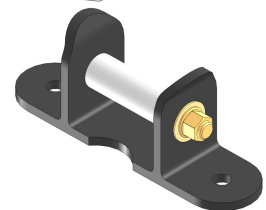
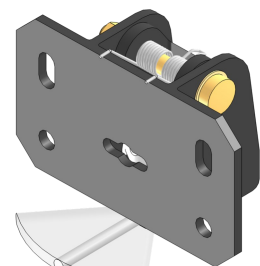
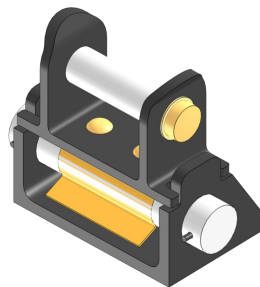
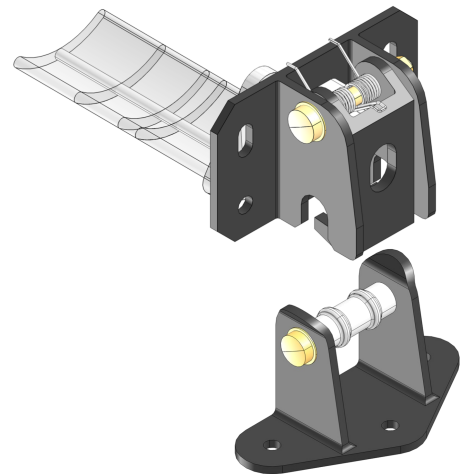
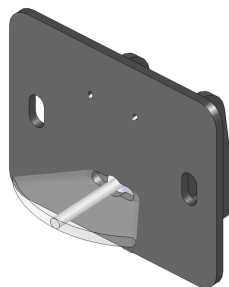
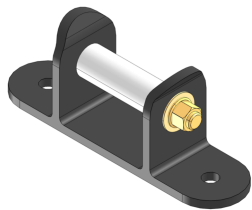
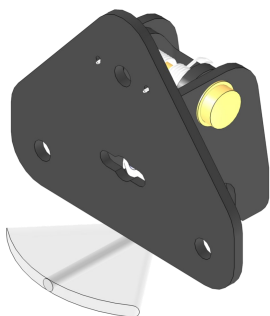


QUICK RELEASE LATCH

HARDWARE CATALOG

JMIH-CAT-001 Rev E



11221 69th STREET NORTH
LARGO, FL 33773-5504
727-549-9600

2670 EDMONDS LN #100
LEWISVILLE, TX 75067-6728
972-436-7069

JORMAC.COM



JORMAC AEROSPACE

THE DOCUMENTS AND THE INFORMATION DISCLOSED HEREIN IS PROPRIETARY TO JORMAC AEROSPACE AND UNLESS OTHERWISE SPECIFIED UNDER WRITTEN AGREEMENT MAY NEITHER BE REPRODUCED OR COPIED IN WHOLE OR IN PART OR DISCLOSED TO OTHERS NOR EMPLOYED FOR DESIGN, PROCUREMENT, OR MANUFACTURING PURPOSES WITHOUT THE WRITTEN PERMISSION OF JORMAC AEROSPACE.



INDEX:

<u>A. Quick Release Latches:</u>	Page
1. <u>Hook Assembly, Rotary, Standard Release Rod Position, Rect. Base, 4 Bolt Pattern</u>1
2. <u>Hook Assembly, Rotary, Opposite Release Rod Position, Rect. Base, 4 Bolt Pattern</u>2
3. <u>Hook Assembly, Rotary, Standard Release Rod Position, Triangle Base, 3 Bolt Pattern</u>3
4. <u>Hook Assembly, Rotary, Opposite Release Rod Position, Triangle Base, 3 Bolt Pattern</u>4
5. <u>Hook Assembly, Rotary, Standard Release Rod Position, Rect. Base, 2 Bolt Pattern</u>5
6. <u>Hook Assembly, Rotary, Opposite Release Rod Position, Rect. Base, 2 Bolt Pattern</u>6
7. <u>Hook Assembly, Rotary, Standard Release Rod Position, Ext. Shaft, Rect. Base, 4 Bolt Pattern</u>7
8. <u>Hook Assembly, Rotary, Opposite Release Rod Position, Ext. Shaft, Rect. Base, 4 Bolt Pattern</u>8
9. <u>Hook Assembly, Rotary, Standard Release Rod Position, Short Shaft, Rect. Base, 4 Bolt Pattern</u>9
10. <u>Hook Assy, Rotary, Standard Release Rod Position, Ext. Shaft, Triangle Base, 3 Bolt Pattern</u>10
11. <u>Hook Assy, Rotary, Opposite Release Rod Position, Ext. Shaft, Triangle Base, 3 Bolt Pattern</u>11
12. <u>Hook Assy, Rotary, Standard Release Rod Position, Short Shaft, Triangle Base, 3 Bolt Pattern</u>12
13. <u>Hook Assy, Rotary, Standard Release Rod Position, Extended Shaft, Rect. Base, 2 Bolt Pattern</u>13
14. <u>Hook Assy, Rotary, Opposite Release Rod Position, Extended Shaft, Rect. Base, 2 Bolt Pattern</u>14
15. <u>Hook Assy, Rotary, Standard Release Rod Position, Short Shaft, Rect. Base, 2 Bolt Pattern</u>15
16. <u>Strike Base Assembly, Standard Height, Narrow Rect. Base, 2 Bolt Pattern, Self Closing</u>16
17. <u>Strike Base Assembly, Standard Height, Wide Rect. Base, No Holes, Self Closing</u>17
18. <u>Strike Base Assembly, Reduced Height, Narrow Rect. Base, 2 Bolt Pattern, Self Closing</u>18
19. <u>Strike Base Assembly, Reduced Height, Wide Rect. Base, No Holes, Self Closing</u>19





INDEX:

	Page
20. <u>Strike Base Assembly, Tall Height, Triangle Base, 3 Bolt Pattern, Self Closing</u>20
21. <u>Strike Base Assembly, Tall Height, Wide Rect. Base, No Holes, Self Closing</u>21
22. <u>Strike Base Assembly, With Spring Clip, Self Closing</u>22
23. <u>Hook Assembly, Pivot Mechanism, Standard Release Rod Height, Rect. Base, 4 Bolt Pattern</u>23
24. <u>Hook Assembly, Pivot Mechanism, High Release Rod Height, Rect. Base, 4 Bolt Pattern</u>24
25. <u>Hook Assembly, Pivot Mechanism, Low Release Rod Height, Rect. Base, 4 Bolt Pattern</u>25
26. <u>Hook Assembly, Pivot Mechanism, Standard Release Rod Height, Triangle Base, 3 Bolt Pattern</u>26
27. <u>Hook Assembly, Pivot Mechanism, High Release Rod Height, Triangle Base, 3 Bolt Pattern</u>27
28. <u>Hook Assembly, Pivot Mechanism, Low Release Rod Height, Triangle Base, 3 Bolt Pattern</u>28
29. <u>Hook Assembly, Pivot Mechanism, Standard Release Rod Height, Rect. Base, 2 Bolt Pattern</u>29
30. <u>Hook Assembly, Pivot Mechanism, High Release Rod Height, Rect. Base, 2 Bolt Pattern</u>30
31. <u>Hook Assembly, Pivot Mechanism, Low Release Rod Height, Rect. Base, 2 Bolt Pattern</u>31
32. <u>Strike Base Assembly, Standard Height, Rect. Base, 2 Bolt Pattern</u>32
33. <u>Strike Base Assembly, Standard Height, Wide Rect. Base, No Holes</u>33
34. <u>Strike Base Assembly, Tall Height, Triangle Base, 3 Bolt Pattern</u>34
35. <u>Strike Base Assembly, Tall Height, Wide Rect. Base, No Holes</u>35
36. <u>Strike Base Assembly, With Spring Clip Roller Base Assembly, For Spring Clip, No Holes</u>36





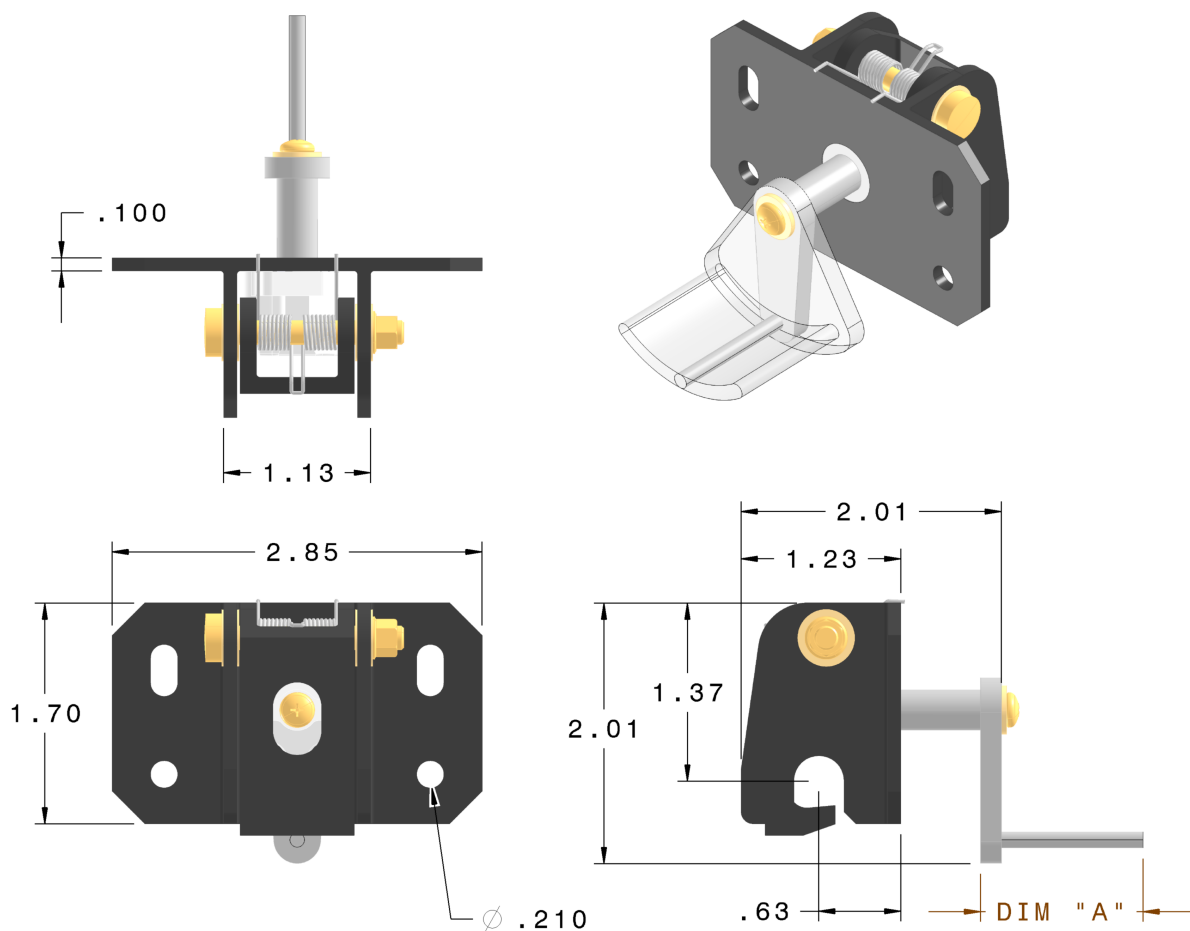
INDEX:

<u>B. Credit Card Latches:</u>	Page
37. <u>Catch Assembly, Structure to Panel, Triangle Base, 3 Bolt Pattern</u>37
38. <u>Catch Assembly, Structure to Panel, Triangle Base, 3 Bolt Pattern, Pre-Load Spring</u>38
39. <u>Catch Assembly, Panel to Panel, Rect. Base, No Hole, 0.03” Offset, Pre-Load Spring</u>39
40. <u>Catch Assembly, Panel to Panel, Rect. Base, No Hole, 0.03” Offset</u>40
41. <u>Catch Assembly, Panel to Panel, Rect. Base, No Hole, 0.17” Offset</u>41
42. <u>Catch Assembly, Structure to Panel, Joggle Rod, Rect. Base, 2 Bolt Pattern</u>42
43. <u>Catch Assembly, Structure to Panel, Angled Rod, Rect. Base, 2 Bolt Pattern</u>43
44. <u>Base Assembly, Rect. Base, 2 Bolt Pattern Catch</u>44





**Quick Release Latch - Hook Assembly, Rotary Mechanism, Standard
Release Rod Position, Rect. Base, 4 Bolt Pattern**



Part Number	"A"
JMIH-130-211-511	1.25"
JMIH-130-211-513	1.50"
JMIH-130-211-515	2.13"
JMIH-130-211-517	3.00"
JMIH-130-211-519	5.00"

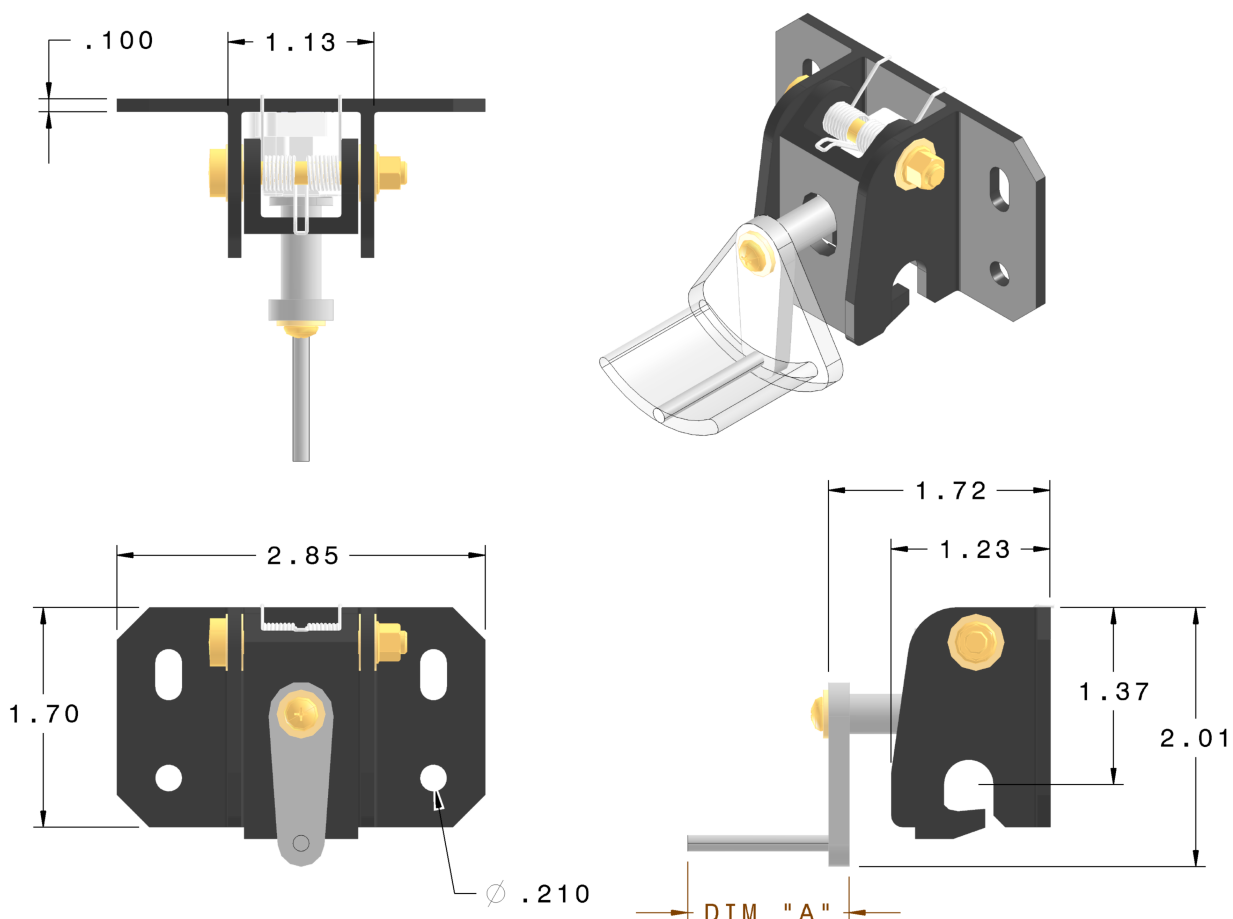
Note: JMIH-130-211-XXX Hooks Are Designed to
Work With JMIH-130-221-XXX Strikes.

[Back To INDEX](#)





Quick Release Latch - Hook Assembly, Rotary Mechanism, Opposite Release Rod Position, Rect. Base, 4 Bolt Pattern



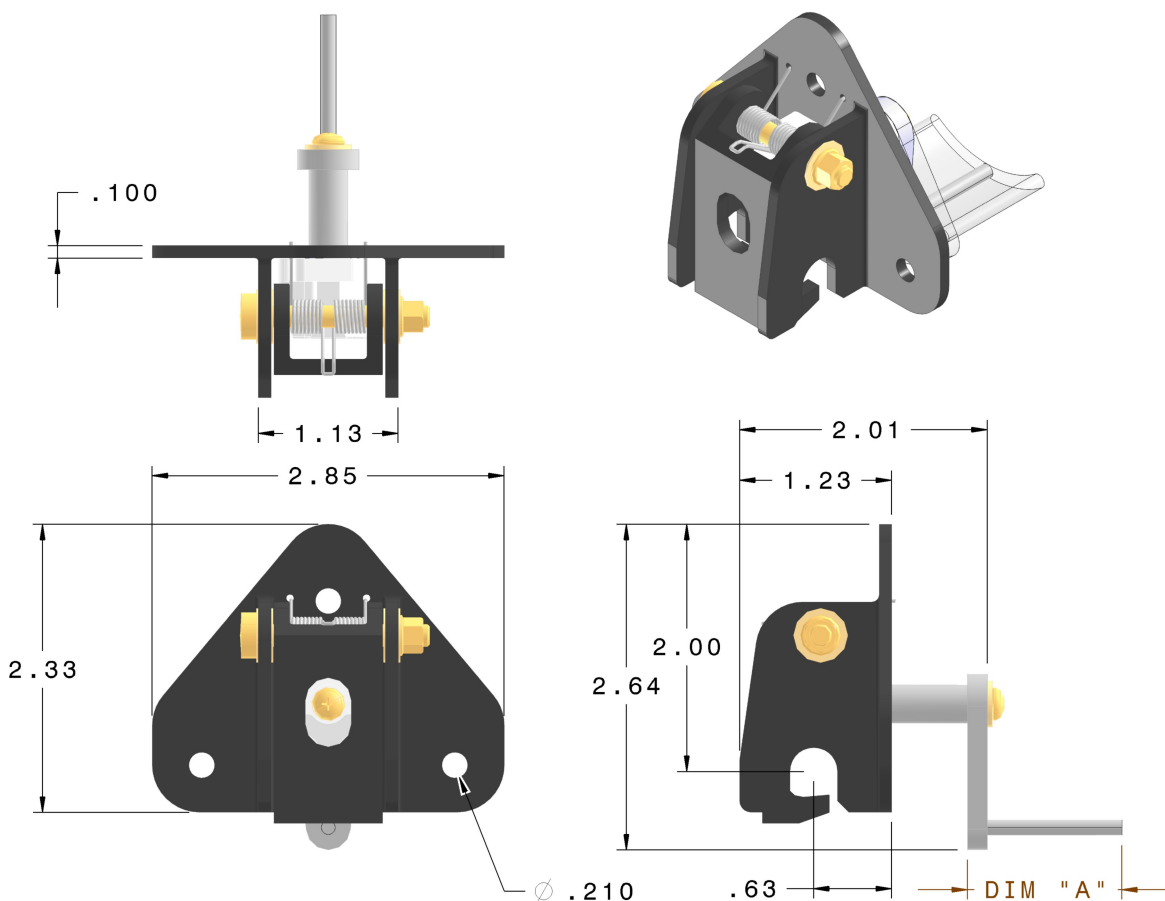
Part Number	"A"
JMIH-130-211-512	1.25"
JMIH-130-211-514	1.50"
JMIH-130-211-516	2.13"
JMIH-130-211-518	3.00"
JMIH-130-211-520	5.00"

Note: JMIH-130-211-XXX Hooks Are Designed to Work With JMIH-130-221-XXX Strikes.

[Back To INDEX](#)



**Quick Release Latch - Hook Assembly, Rotary Mechanism, Standard
Release Rod Position, Triangle Base, 3 Bolt Pattern**



Part Number	"A"
JMIH-130-211-531	1.25"
JMIH-130-211-533	1.50"
JMIH-130-211-535	2.13"
JMIH-130-211-537	3.00"
JMIH-130-211-539	5.00"

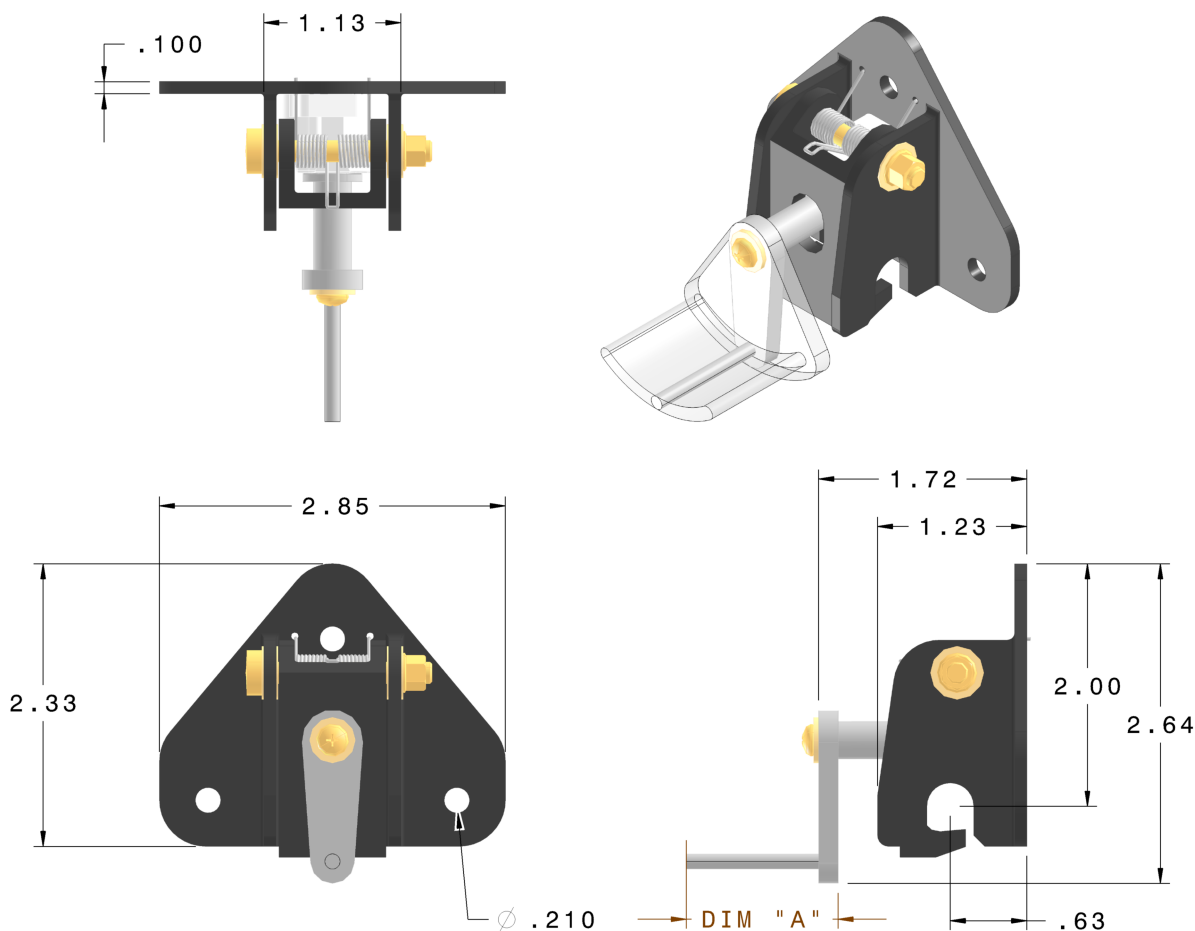
Note: JMIH-130-211-XXX Hooks Are Designed to Work With JMIH-130-221-XXX Strikes.

[Back To INDEX](#)





Quick Release Latch - Hook Assembly, Rotary Mechanism, Opposite Release Rod Position, Triangle Base, 3 Bolt Pattern



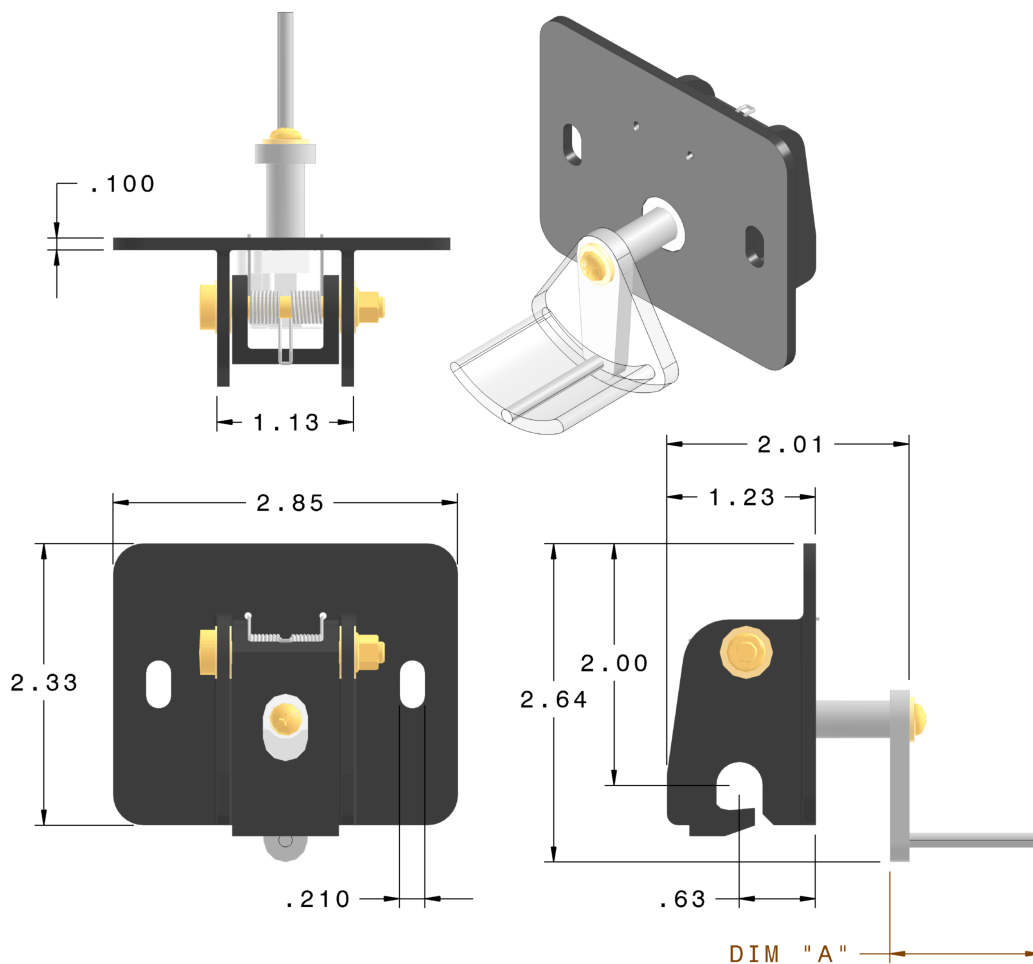
Part Number	"A"
JMIH-130-211-532	1.25"
JMIH-130-211-534	1.50"
JMIH-130-211-536	2.13"
JMIH-130-211-538	3.00"
JMIH-130-211-540	5.00"

Note: JMIH-130-211-XXX Hooks Are Designed to Work With JMIH-130-221-XXX Strikes.

[Back To INDEX](#)



Quick Release Latch - Hook Assembly, Rotary Mechanism, Standard Release Rod Position, Rect. Base, 2 Bolt Pattern



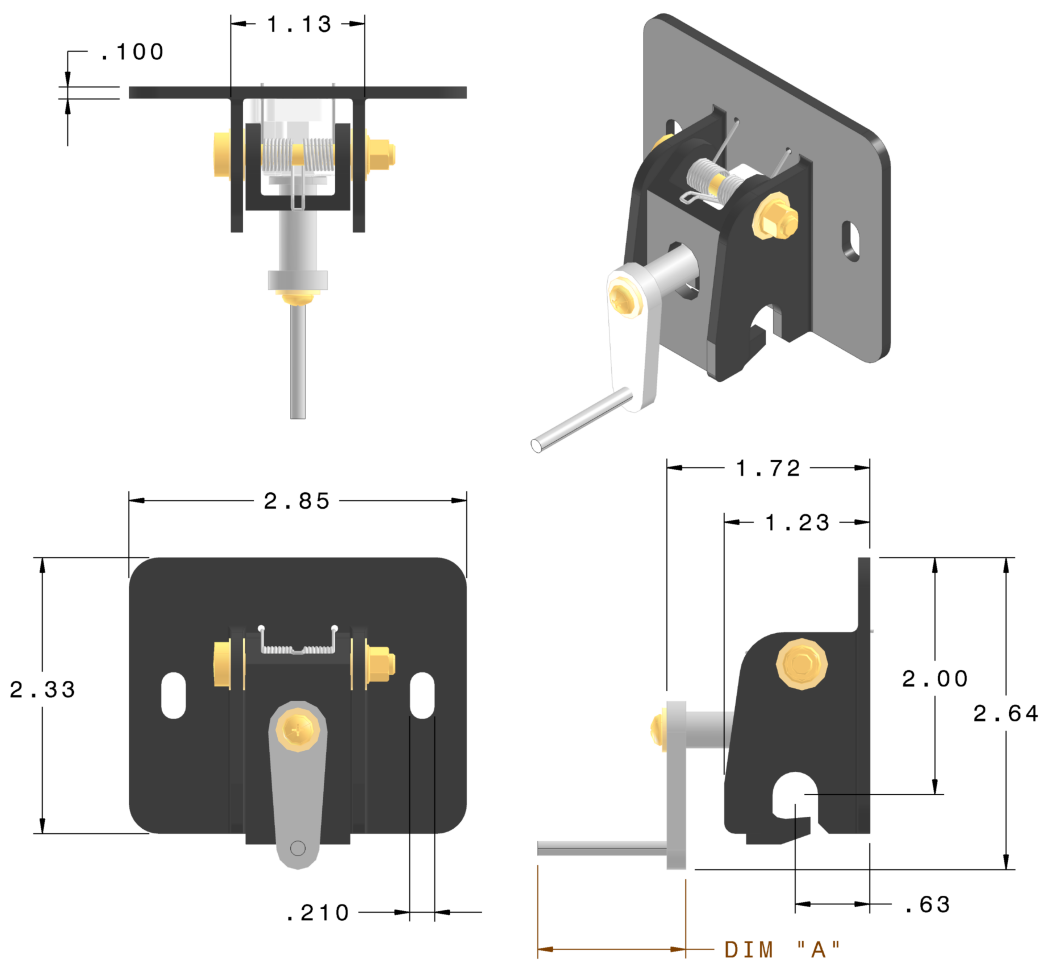
Part Number	"A"
JMIH-130-211-551	1.25"
JMIH-130-211-553	1.50"
JMIH-130-211-555	2.13"
JMIH-130-211-557	3.00"
JMIH-130-211-559	5.00"

Note: JMIH-130-211-XXX Hooks Are Designed to Work With JMIH-130-221-XXX Strikes.

[Back To INDEX](#)



Quick Release Latch - Hook Assembly, Rotary Mechanism, Opposite Release Rod Position, Rect. Base, 2 Bolt Pattern



Part Number	"A"
JMIH-130-211-552	1.25"
JMIH-130-211-554	1.50"
JMIH-130-211-556	2.13"
JMIH-130-211-558	3.00"
JMIH-130-211-560	5.00"

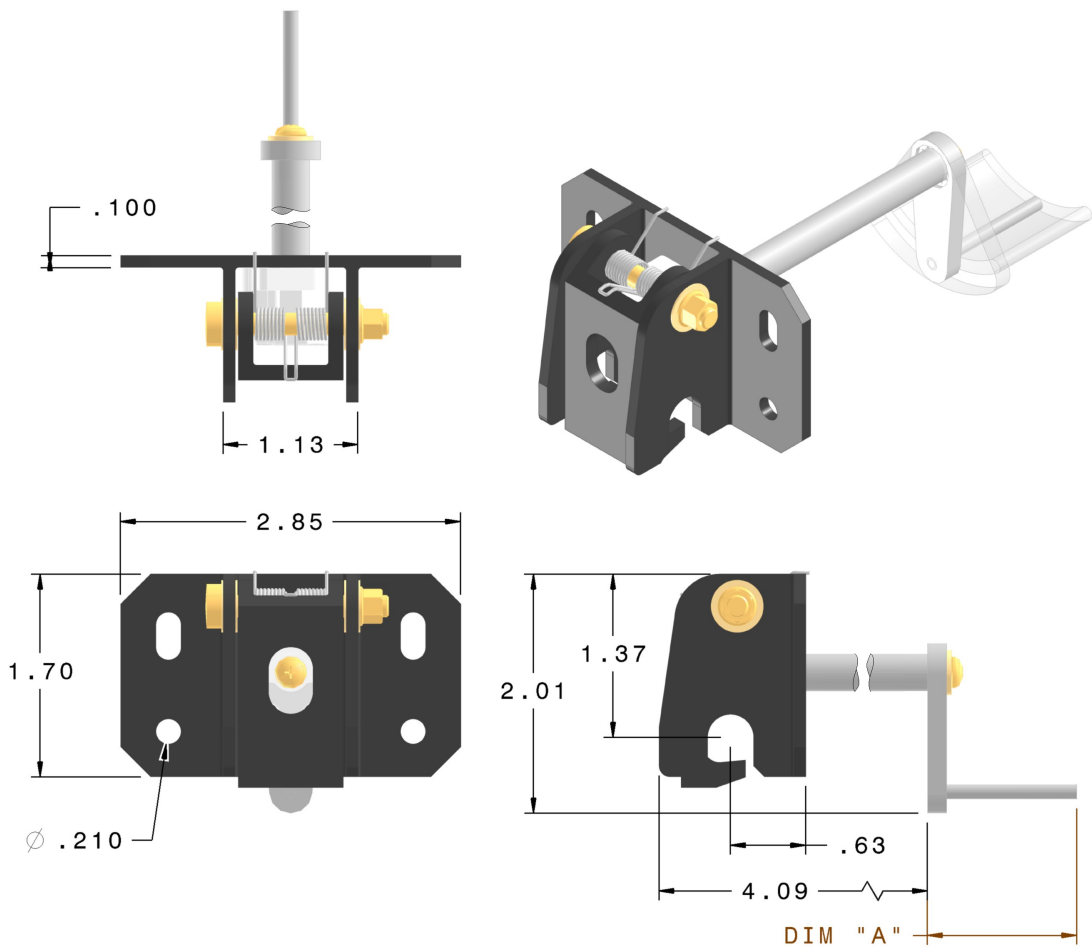
Note: JMIH-130-211-XXX Hooks Are Designed to Work With JMIH-130-221-XXX Strikes.

[Back To INDEX](#)





**Quick Release Latch - Hook Assembly, Rotary Mechanism, Standard
Release Rod Position, Extended Shaft, Rect. Base, 4 Bolt Pattern**



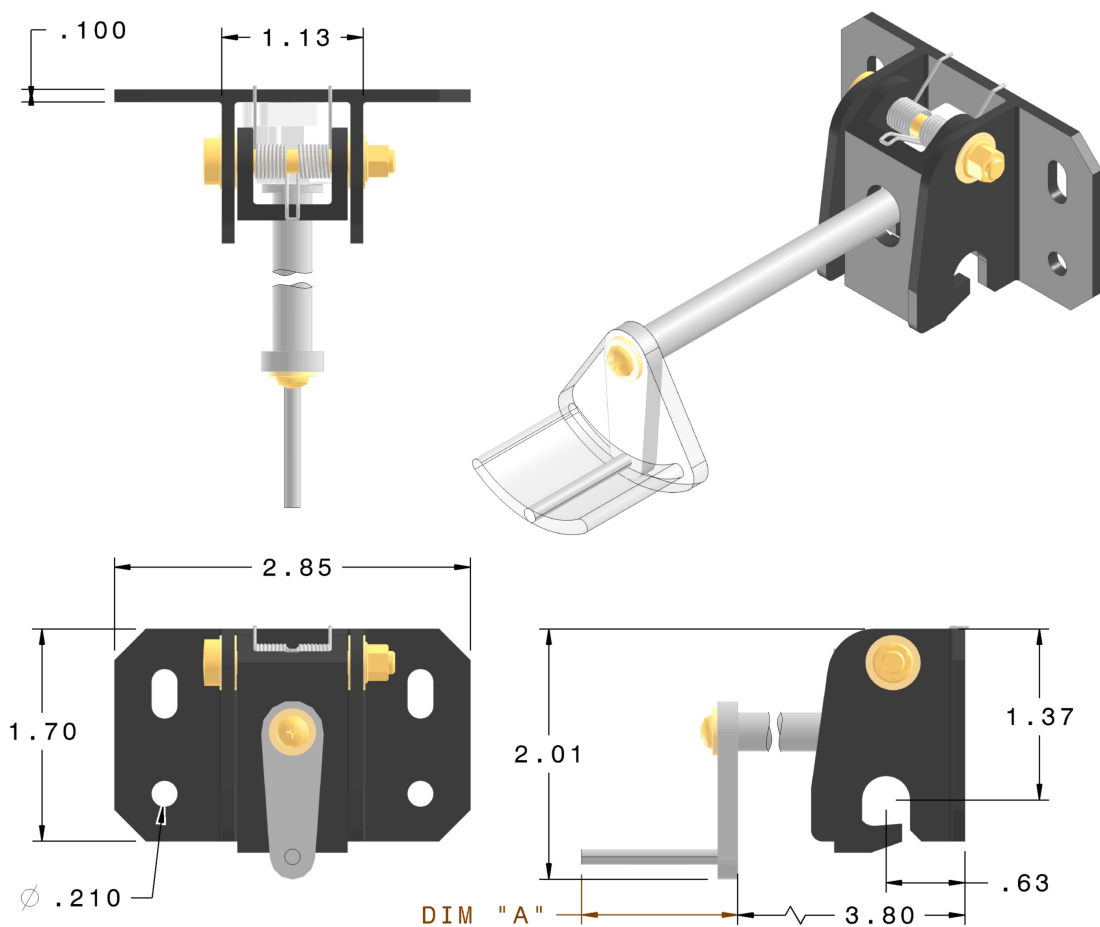
Part Number	"A"
JMIH-130-231-611	1.25"
JMIH-130-231-613	1.50"
JMIH-130-231-615	2.13"
JMIH-130-231-617	3.00"

Note: JMIH-130-231-XXX Hooks Are Designed to
Work With JMIH-130-221-XXX Strikes.

[Back To INDEX](#)



Quick Release Latch - Hook Assembly, Rotary Mechanism, Opposite Release Rod Position, Extended Shaft, Rect. Base, 4 Bolt Pattern



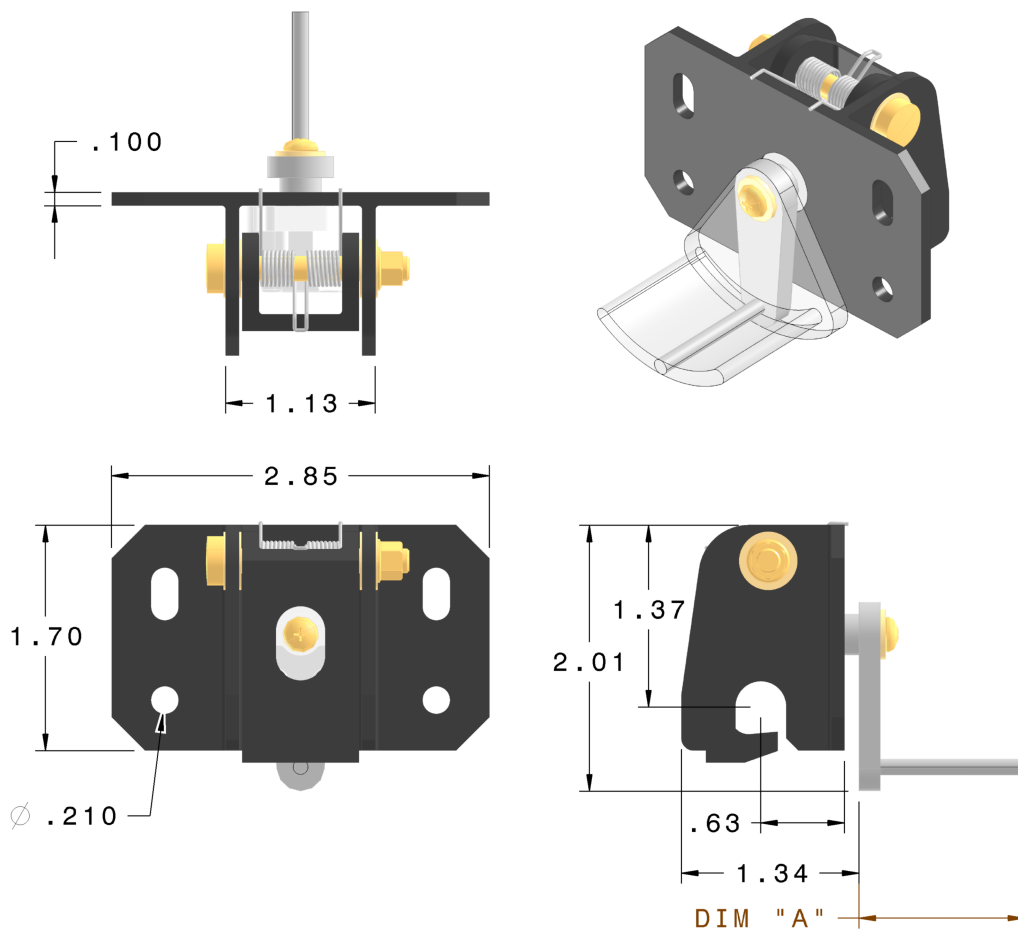
Part Number	"A"
JMIH-130-231-612	1.25"
JMIH-130-231-614	1.50"
JMIH-130-231-616	2.13"
JMIH-130-231-618	3.00"

Note: JMIH-130-231-XXX Hooks Are Designed to Work With JMIH-130-221-XXX Strikes.

[Back To INDEX](#)



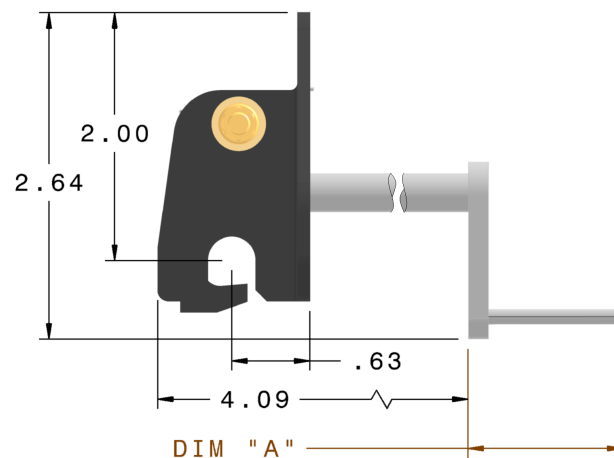
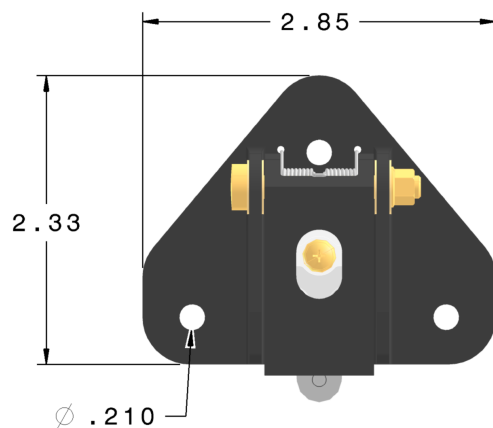
Quick Release Latch - Hook Assembly, Rotary Mechanism, Standard Release Rod Position, Short Shaft, Rect. Base, 4 Bolt Pattern



Part Number	"A"
JMIH-130-231-621	1.25"
JMIH-130-231-623	1.50"
JMIH-130-231-625	2.13"
JMIH-130-231-627	3.00"

Note: JMIH-130-231-XXX Hooks Are Designed to Work With JMIH-130-221-XXX Strikes.

[Back To INDEX](#)

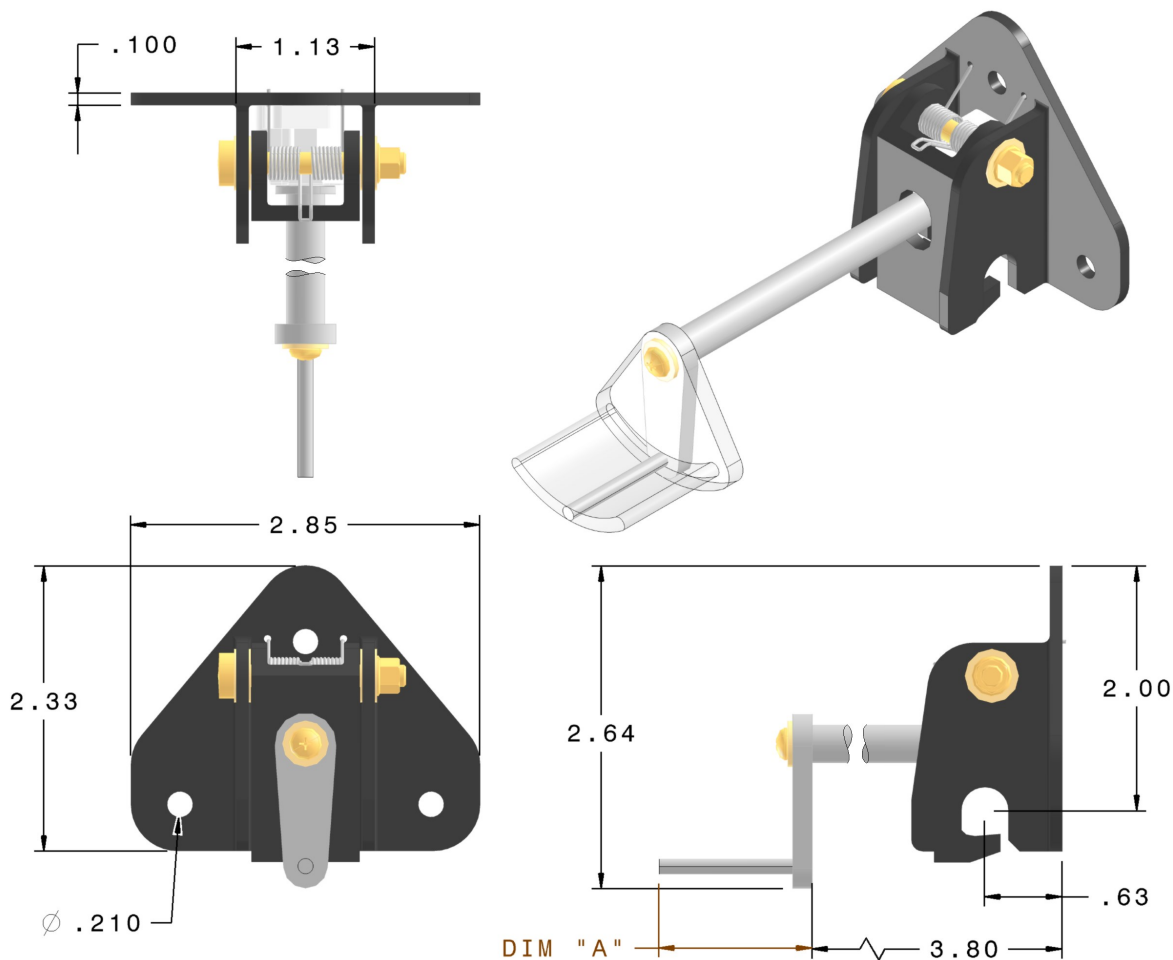


Note: JMIH-130-231-XXX Hooks Are Designed to Work With JMIH-130-221-XXX Strikes.





Quick Release Latch - Hook Assembly, Rotary Mechanism, Opposite Release Rod Position, Extended Shaft, Triangle Base, 3 Bolt Pattern



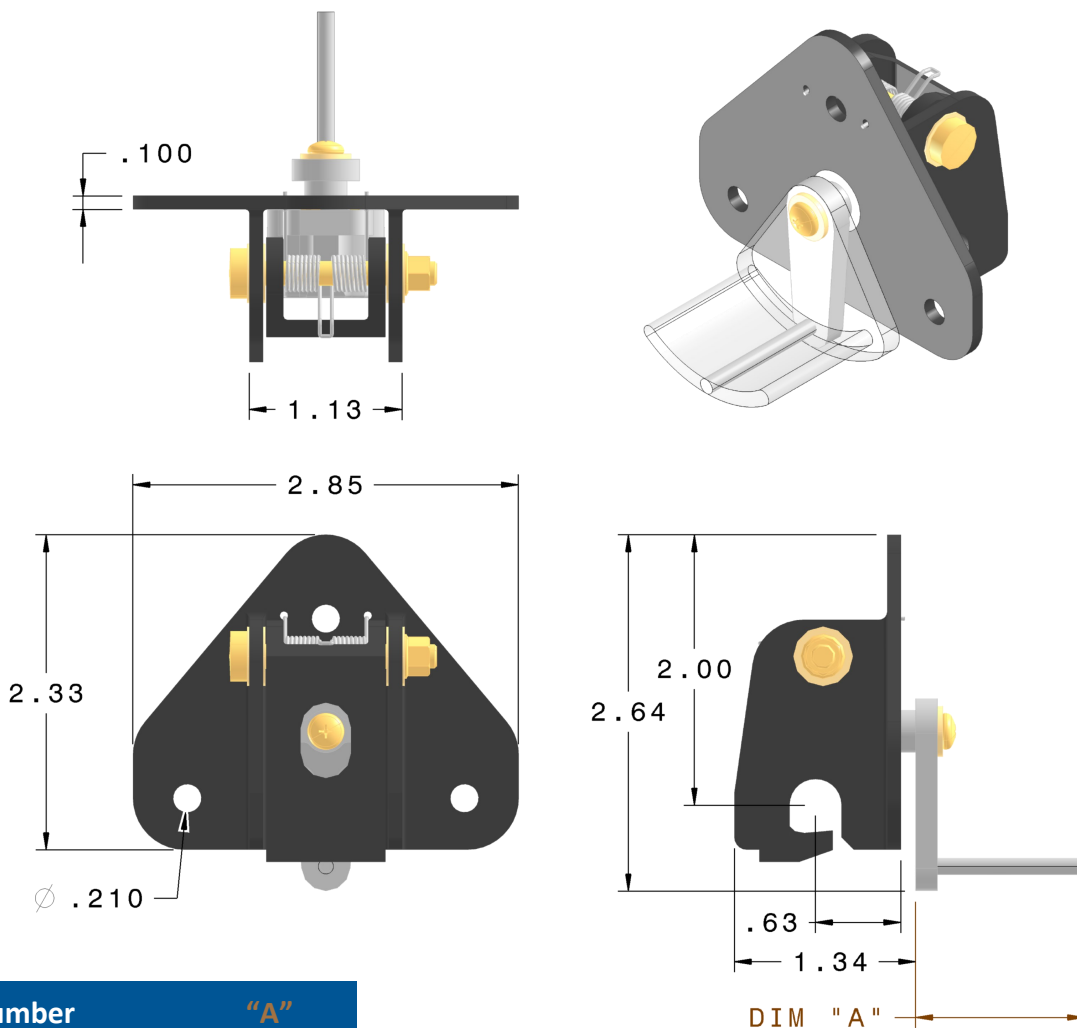
Part Number	"A"
JMIH-130-231-632	1.25"
JMIH-130-231-634	1.50"
JMIH-130-231-636	2.13"
JMIH-130-231-638	3.00"

Note: JMIH-130-231-XXX Hooks Are Designed to Work With JMIH-130-221-XXX Strikes.

[Back To INDEX](#)



Quick Release Latch - Hook Assembly, Rotary Mechanism, Standard Release Rod Position, Short Shaft, Triangle Base, 3 Bolt Pattern



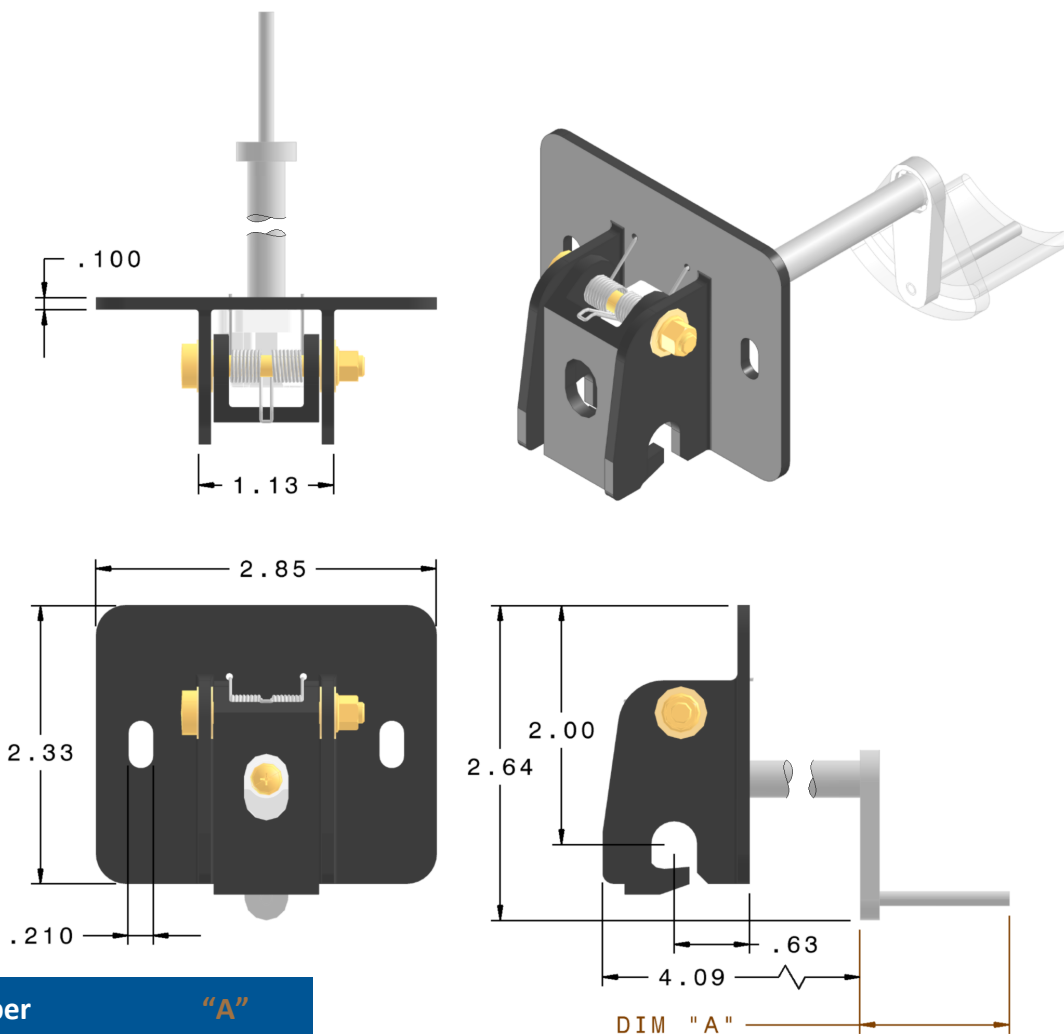
Part Number	"A"
JMIH-130-231-641	1.25"
JMIH-130-231-643	1.50"
JMIH-130-231-645	2.13"
JMIH-130-231-647	3.00"

Note: JMIH-130-231-XXX Hooks Are Designed to Work With JMIH-130-221-XXX Strikes.

[Back To INDEX](#)



Quick Release Latch - Hook Assembly, Rotary Mechanism, Standard Release Rod Position, Extended Shaft, Rect. Base, 2 Bolt Pattern



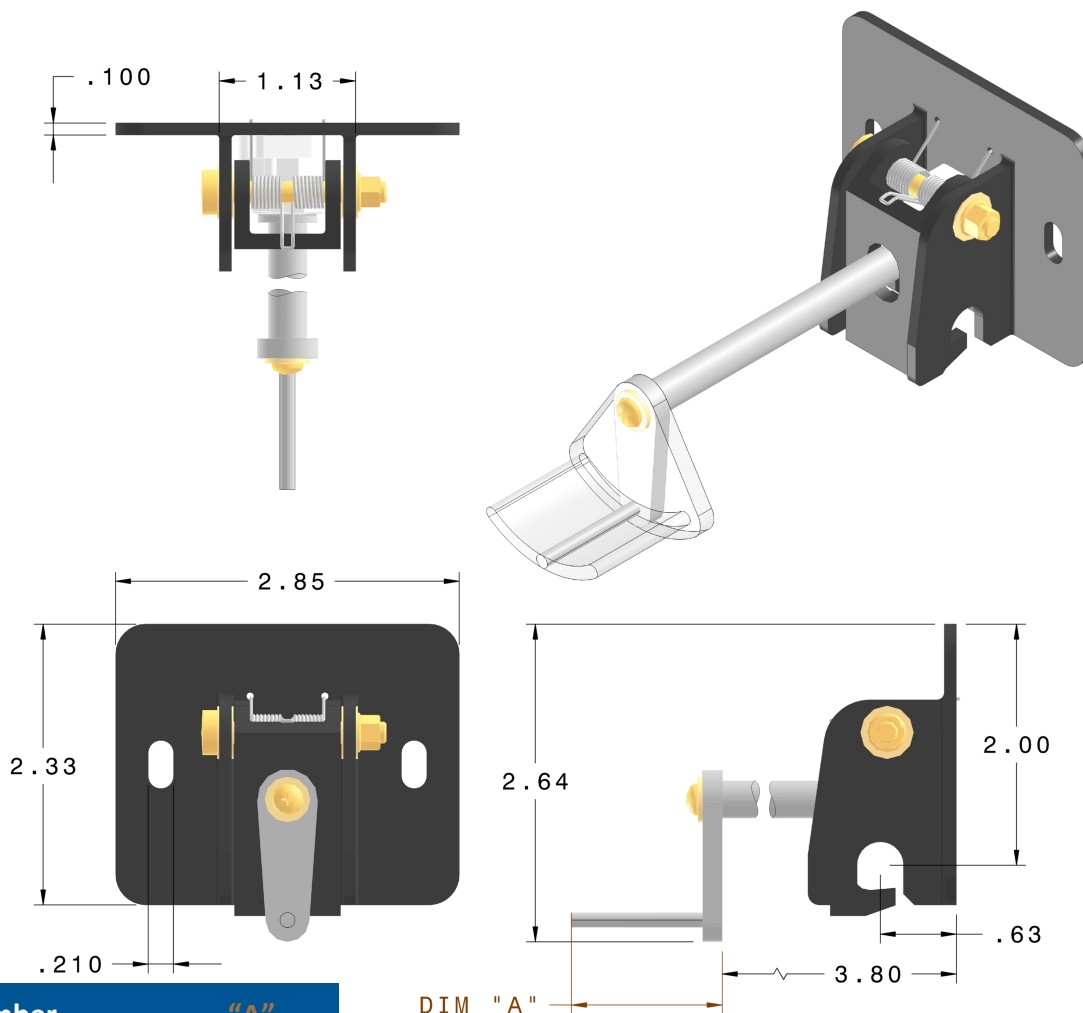
Part Number	"A"
JMIH-130-231-651	1.25"
JMIH-130-231-653	1.50"
JMIH-130-231-655	2.13"
JMIH-130-231-657	3.00"

Note: JMIH-130-231-XXX Hooks Are Designed to Work With JMIH-130-221-XXX Strikes.

[Back To INDEX](#)



Quick Release Latch - Hook Assembly, Rotary Mechanism, Opposite Release Rod Position, Extended Shaft, Rect. Base, 2 Bolt Pattern



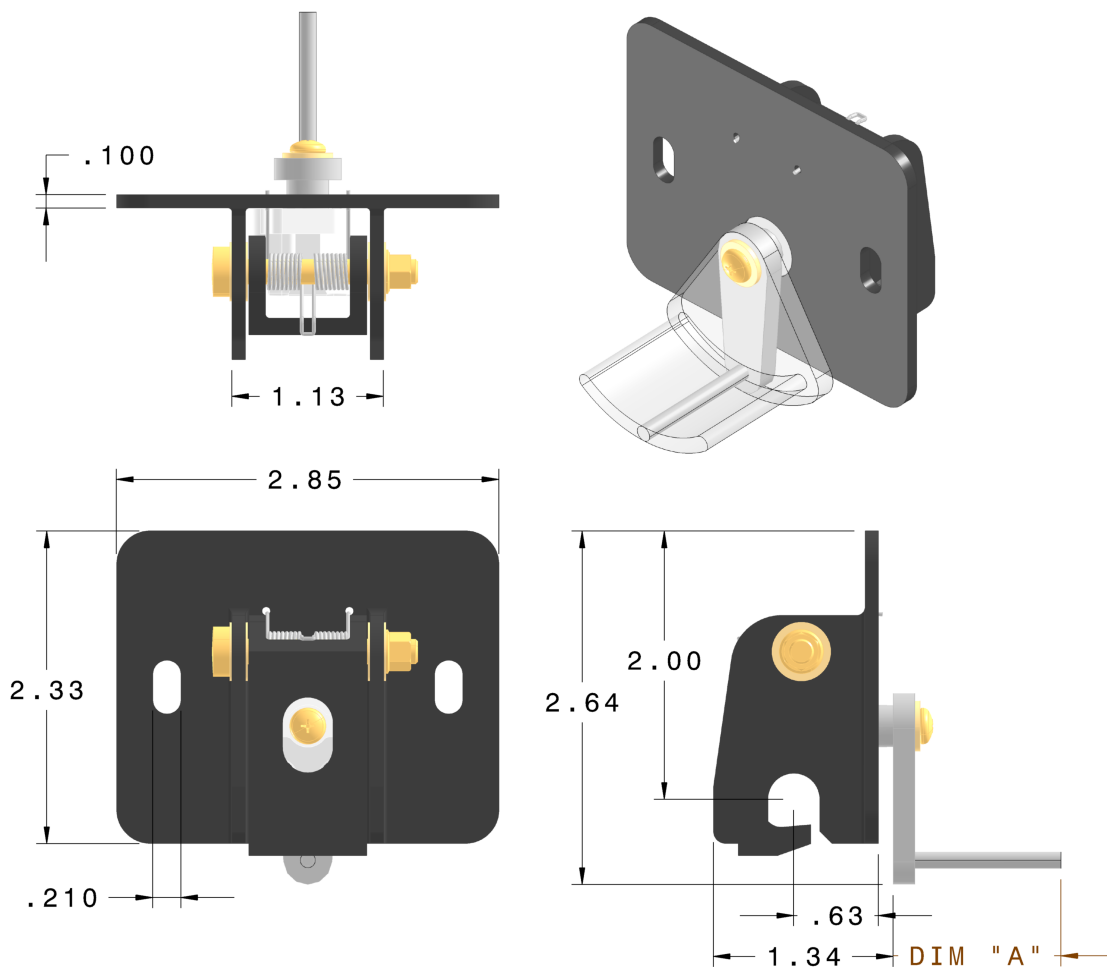
Part Number	"A"
JMIH-130-231-652	1.25"
JMIH-130-231-654	1.50"
JMIH-130-231-656	2.13"
JMIH-130-231-658	3.00"

Note: JMIH-130-231-XXX Hooks Are Designed to Work With JMIH-130-221-XXX Strikes.

[Back To INDEX](#)



**Quick Release Latch - Hook Assembly, Rotary Mechanism, Standard
Release Rod Position, Short Shaft, Rect. Base, 2 Bolt Pattern**



Part Number	"A"
JMIH-130-231-661	1.25"
JMIH-130-231-663	1.50"
JMIH-130-231-665	2.13"
JMIH-130-231-667	3.00"

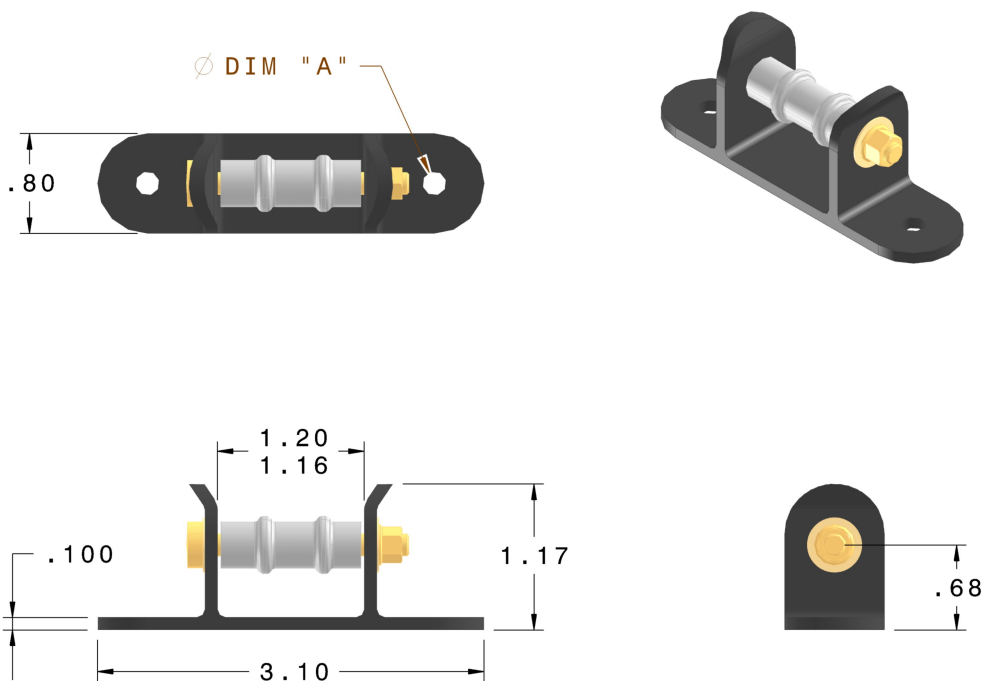
Note: JMIH-130-231-XXX Hooks Are Designed to Work With JMIH-130-221-XXX Strikes.

[Back To INDEX](#)





Quick Release Latch - Strike Base Assembly, Standard Height, Narrow Rect. Base, 2 Bolt Pattern, Self Closing



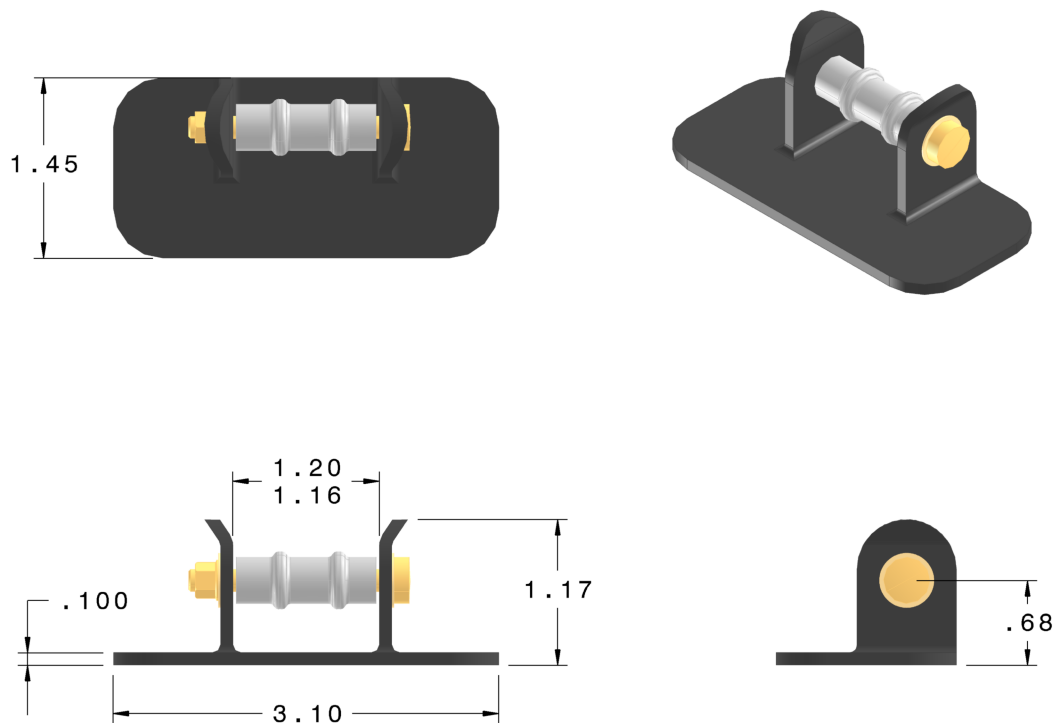
Part Number	"A"
JMIH-130-221-121	Ø.194 - .199
JMIH-130-221-125	Ø.250 - .254

[Back To INDEX](#)





Quick Release Latch - Strike Base Assembly, Standard Height, Wide Rect. Base, No Holes, Self Closing



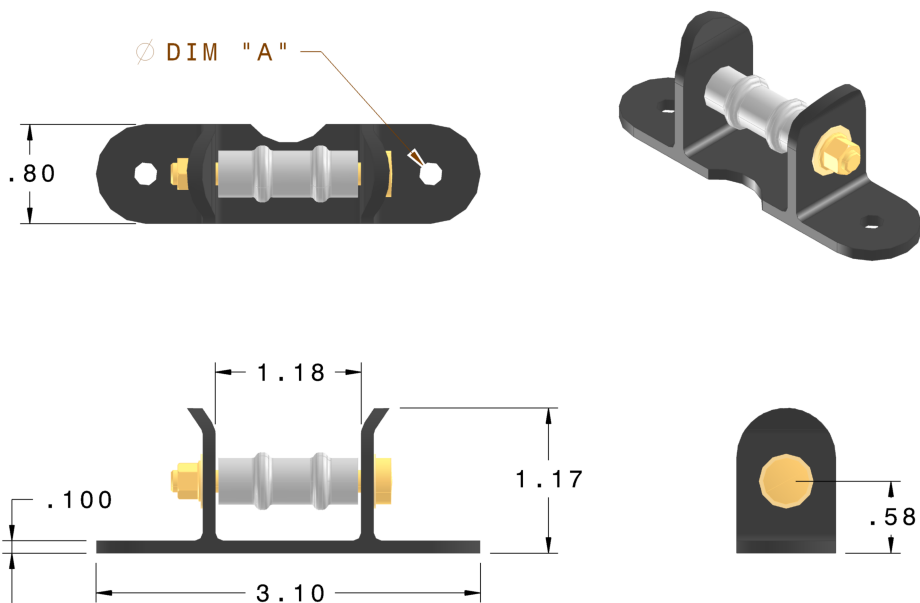
Part Number
JMIH-130-221-123

[Back To INDEX](#)





Quick Release Latch - Strike Base Assembly, Reduced Height, Narrow Rect. Base, 2 Bolt Pattern, Self Closing



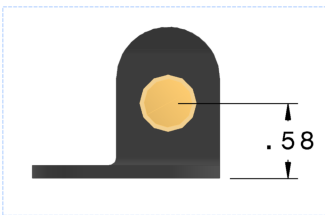
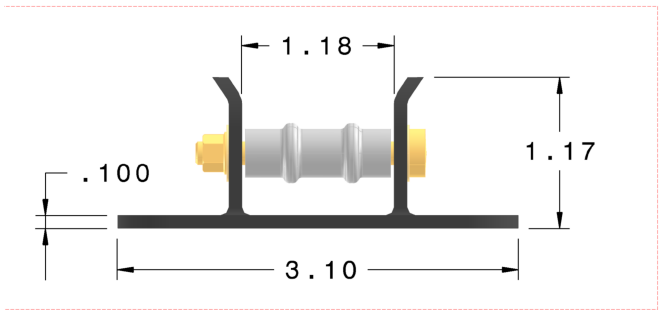
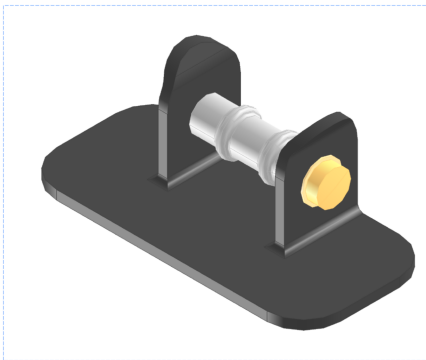
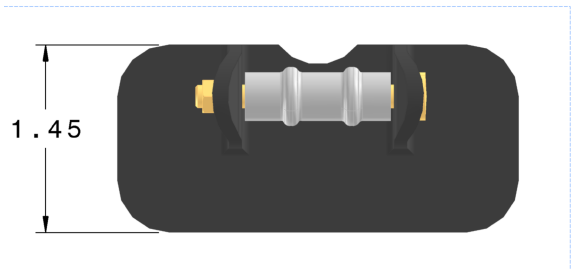
Part Number	"A"
JMIH-130-221-131	Ø.194 - .199
JMIH-130-221-135	Ø.250 - .254

[Back To INDEX](#)





Quick Release Latch - Strike Base Assembly, Reduced Height, Wide Rect. Base, No Holes, Self Closing



Part Number

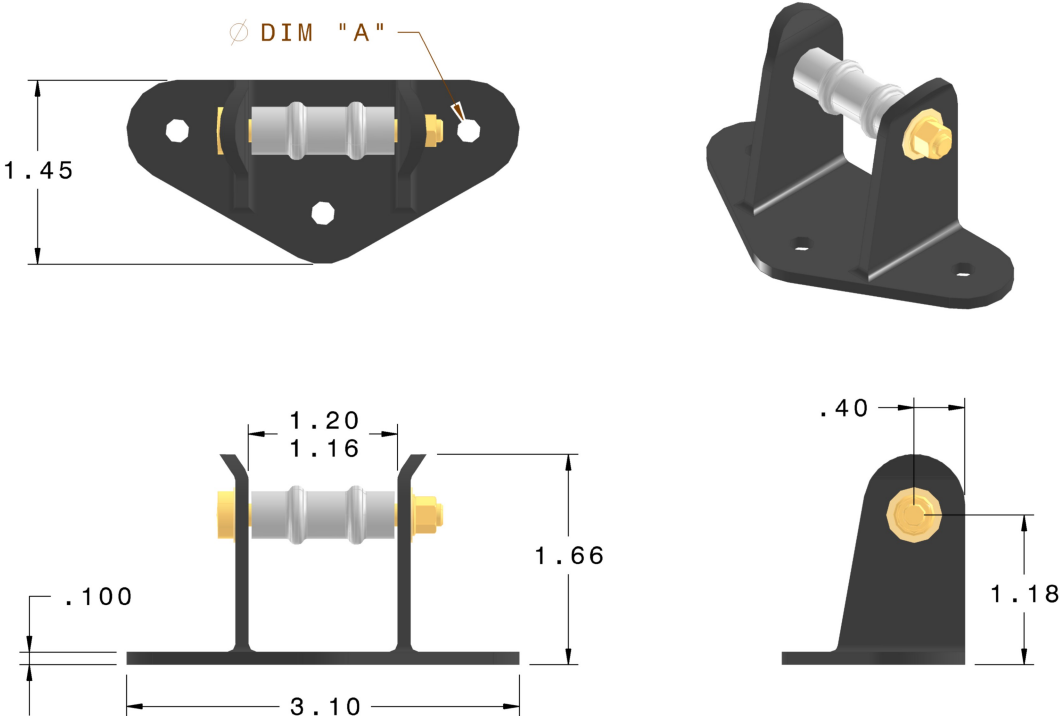
JMIH-130-221-133

[Back To INDEX](#)





**Quick Release Latch - Strike Base Assembly, Tall Height, Triangle
Base, 3 Bolt Pattern, Self Closing**



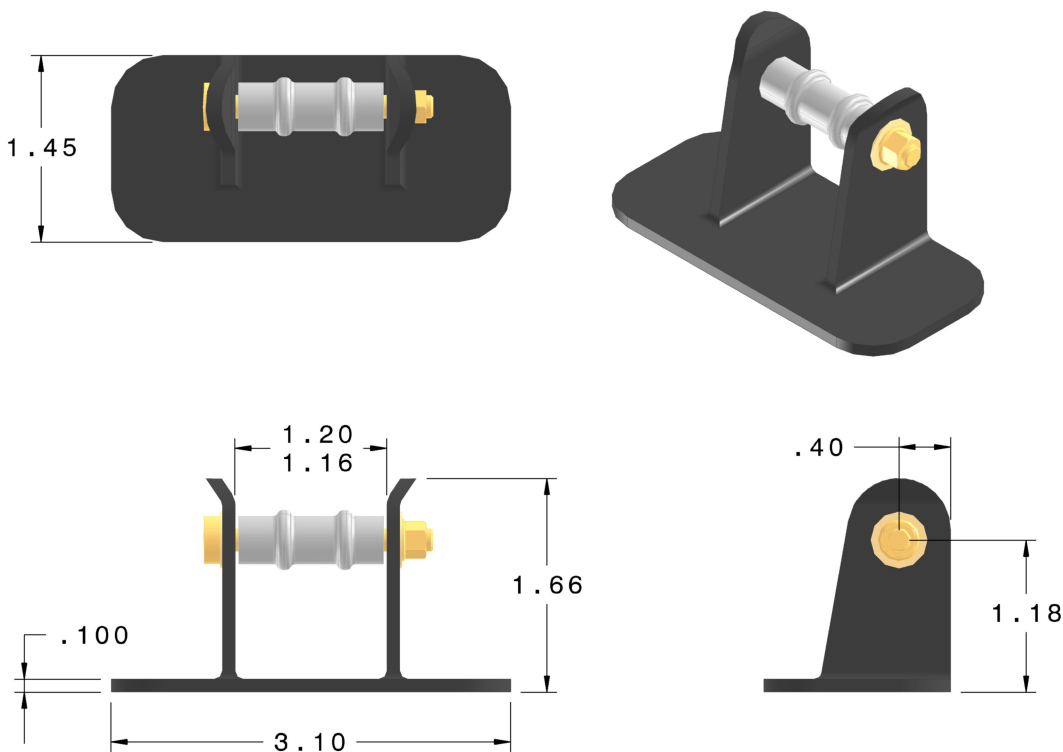
Part Number	"A"
JMIH-130-221-161	Ø.194 - .199
JMIH-130-221-165	Ø.250 - .254

[Back To INDEX](#)





**Quick Release Latch - Strike Base Assembly, Tall Height, Wide Rect.
Base, No Holes, Self Closing**



Part Number

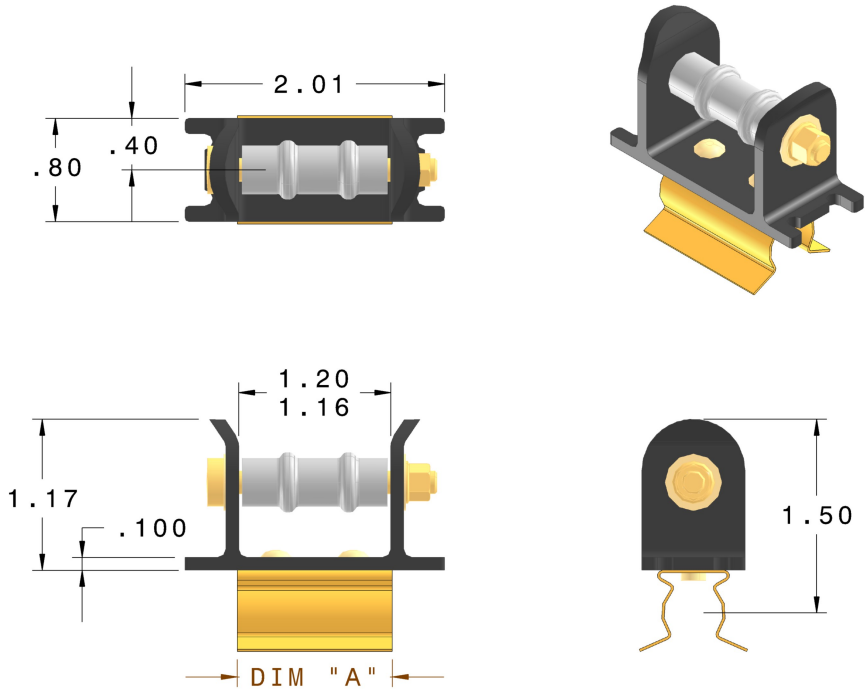
JMIH-130-221-163

[Back To INDEX](#)





**Quick Release Latch - Strike Base Assembly,
With Spring Clip Self Closing**



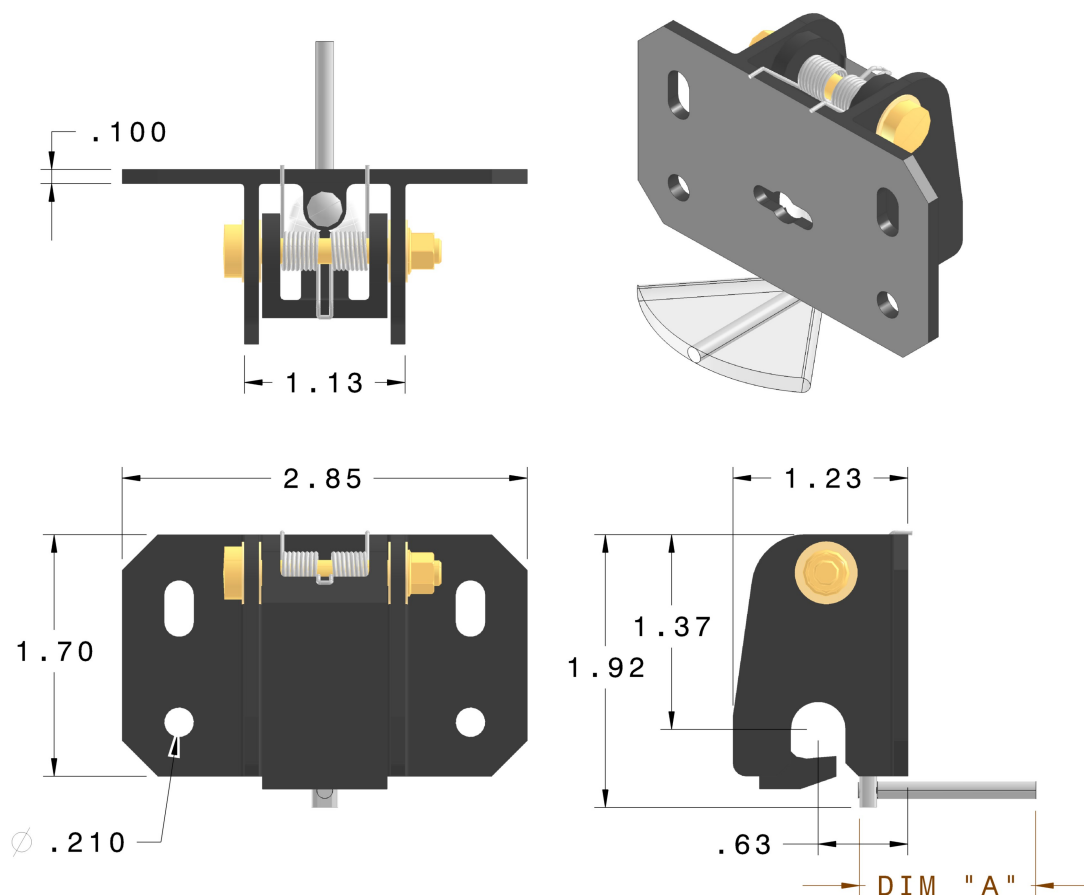
Part Number	"A"
JMIH-130-221-221	.40"
JMIH-130-221-223	.80"
JMIH-130-221-225	1.00"
JMIH-130-221-227	1.20"
JMIH-130-221-229	.60"

[Back To INDEX](#)





Quick Release Latch - Hook Assembly, Pivot Mechanism, Standard Release Rod Height, Rect. Base, 4 Bolt Pattern



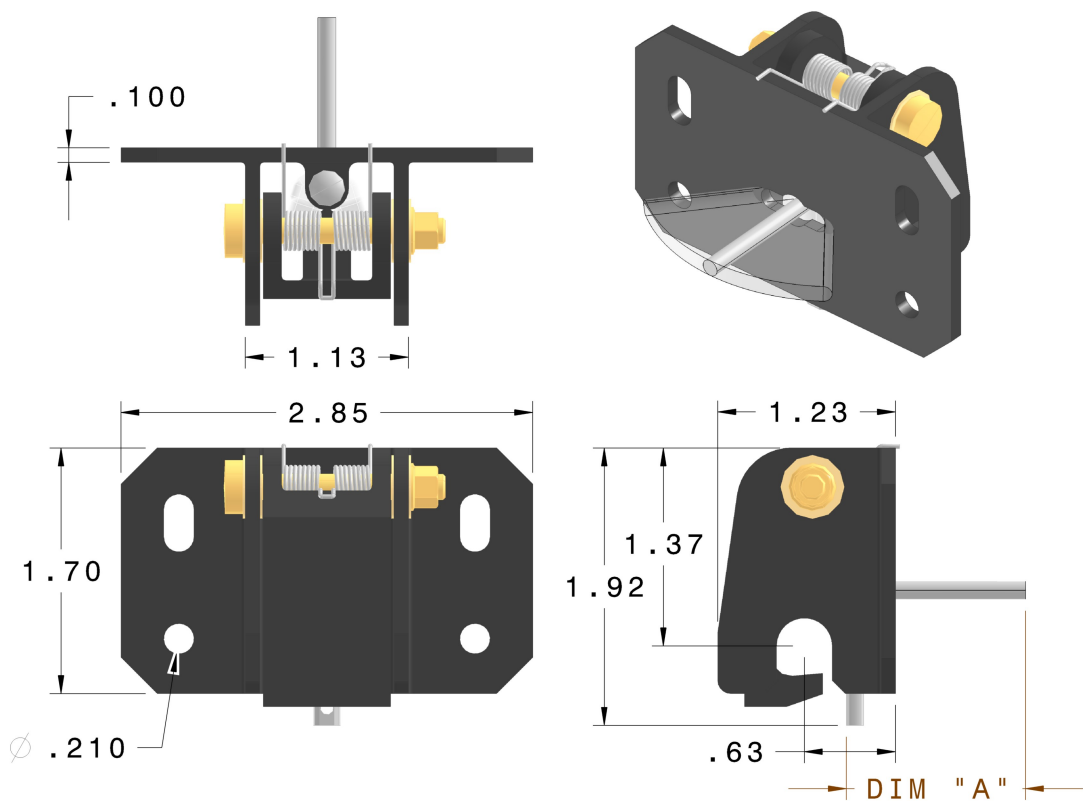
Part Number	"A"
JMIH-130-201-011	1.25"
JMIH-130-201-013	1.50"
JMIH-130-201-015	2.13"
JMIH-130-201-017	3.00"
JMIH-130-201-019	5.00"

Note: JMIH-130-201-XXX Hooks Are Designed to Work With JMIH-130-201-XXX Strikes.

[Back To INDEX](#)



**Quick Release Latch - Hook Assembly, Pivot Mechanism, High
Release Rod Height, Rect. Base, 4 Bolt Pattern**



Part Number	"A"
JMIH-130-201-012	1.25"
JMIH-130-201-014	1.50"
JMIH-130-201-016	2.13"
JMIH-130-201-018	3.00"
JMIH-130-201-020	5.00"

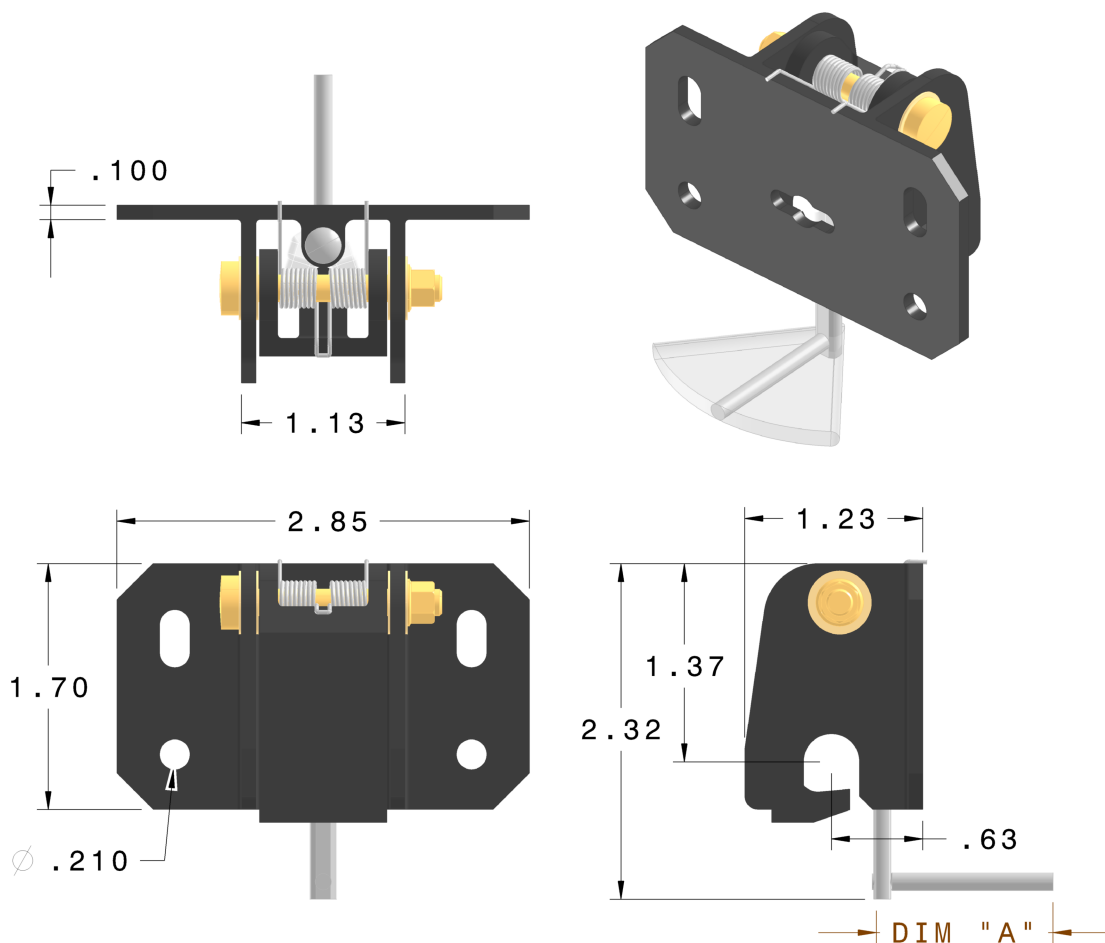
Note: JMIH-130-201-XXX Hooks Are Designed to
Work With JMIH-130-201-XXX Strikes.

[Back To INDEX](#)





**Quick Release Latch - Hook Assembly, Pivot Mechanism, Low
Release Rod Height, Rect. Base, 4 Bolt Pattern**



Part Number	"A"
JMIH-130-201-031	1.25"
JMIH-130-201-033	1.50"
JMIH-130-201-035	2.13"
JMIH-130-201-037	3.00"
JMIH-130-201-039	5.00"

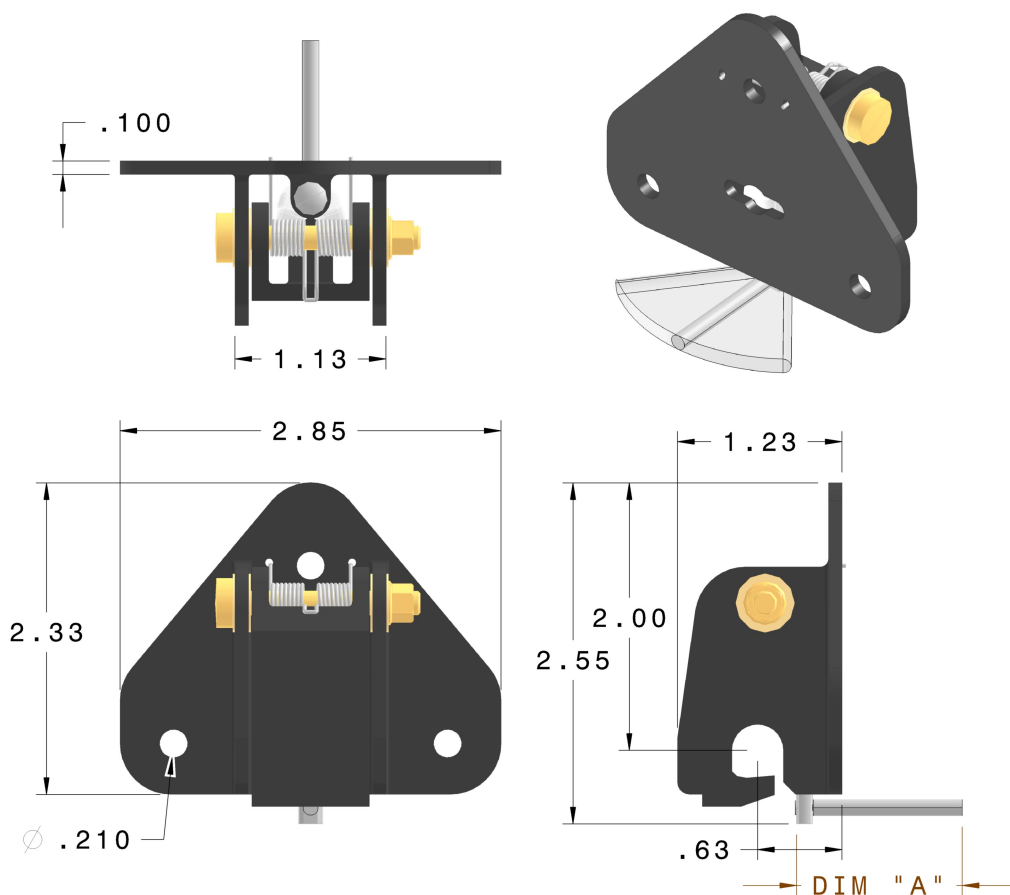
Note: JMIH-130-201-XXX Hooks Are Designed to Work With JMIH-130-201-XXX Strikes.

[Back To INDEX](#)





**Quick Release Latch - Hook Assembly, Pivot Mechanism, Standard
Release Rod Height, Triangle Base, 3 Bolt Pattern**



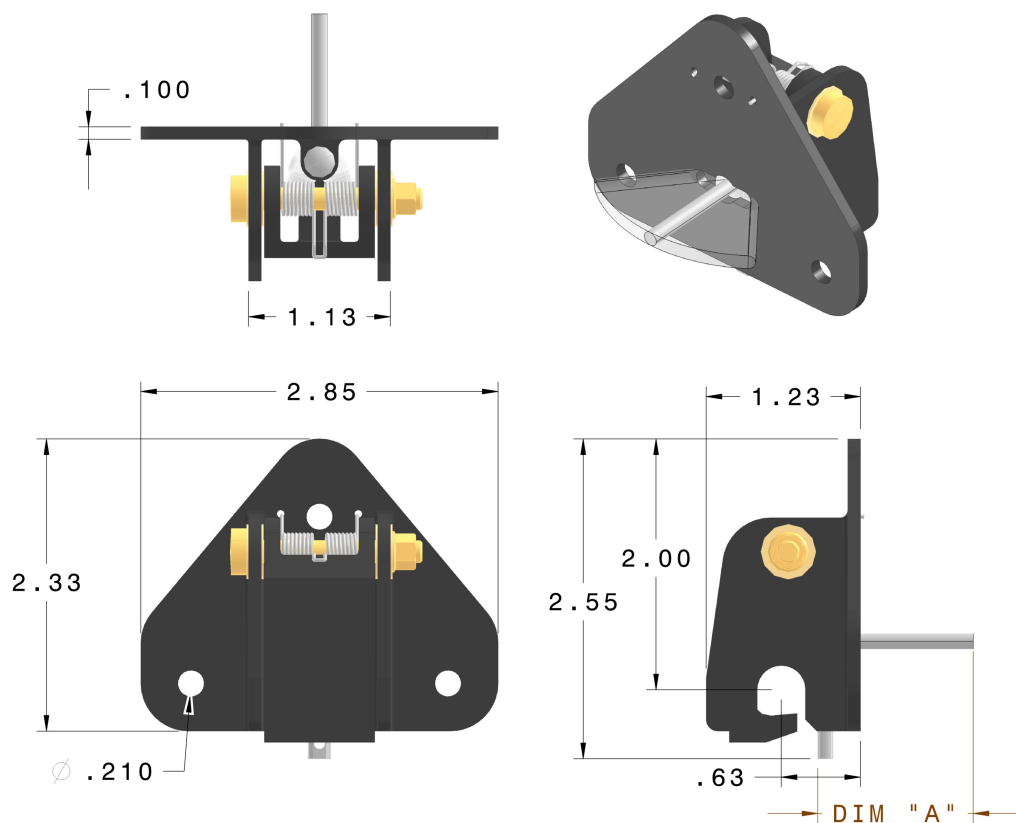
Part Number	"A"
JMIH-130-201-051	1.25"
JMIH-130-201-053	1.50"
JMIH-130-201-055	2.13"
JMIH-130-201-057	3.00"
JMIH-130-201-059	5.00"

Note: JMIH-130-201-XXX Hooks Are Designed to Work With JMIH-130-201-XXX Strikes.

[Back To INDEX](#)



Quick Release Latch - Hook Assembly, Pivot Mechanism, High Release Rod Height, Triangle Base, 3 Bolt Pattern



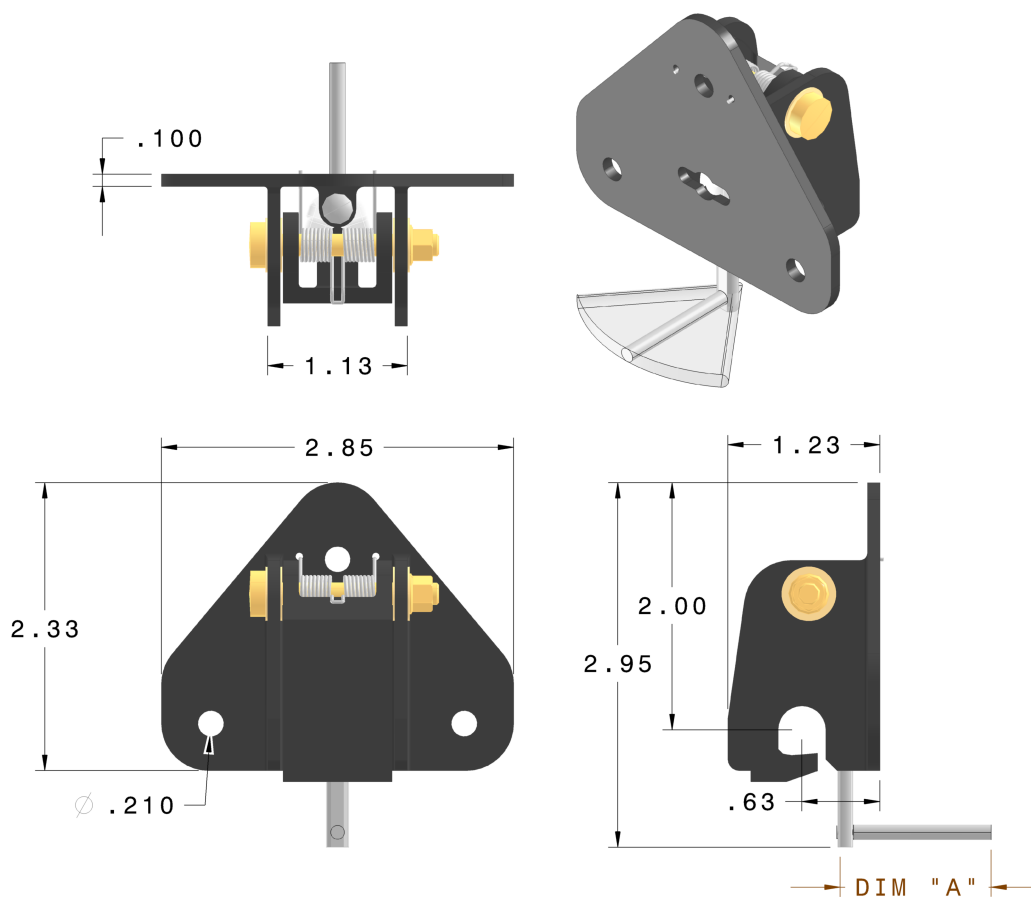
Part Number	"A"
JMIH-130-201-052	1.25"
JMIH-130-201-054	1.50"
JMIH-130-201-056	2.13"
JMIH-130-201-058	3.00"
JMIH-130-201-060	5.00"

Note: JMIH-130-201-XXX Hooks Are Designed to Work With JMIH-130-201-XXX Strikes.

[Back To INDEX](#)



**Quick Release Latch - Hook Assembly, Pivot Mechanism, Low
Release Rod Height, Triangle Base, 3 Bolt Pattern**



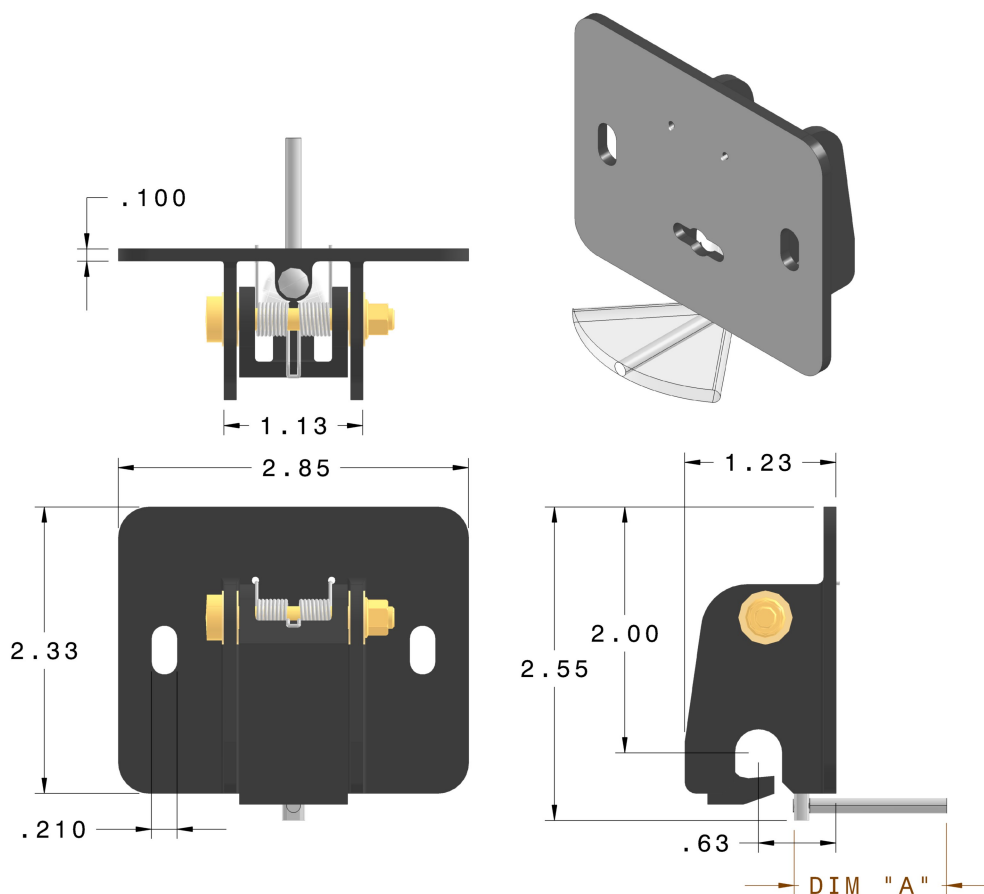
Part Number	"A"
JMIH-130-201-071	1.25"
JMIH-130-201-073	1.50"
JMIH-130-201-075	2.13"
JMIH-130-201-077	3.00"
JMIH-130-201-079	5.00"

Note: JMIH-130-201-XXX Hooks Are Designed to
Work With JMIH-130-201-XXX Strikes.

[Back To INDEX](#)



**Quick Release Latch - Hook Assembly, Pivot Mechanism, Standard
Release Rod Height, Rect. Base, 2 Bolt Pattern**



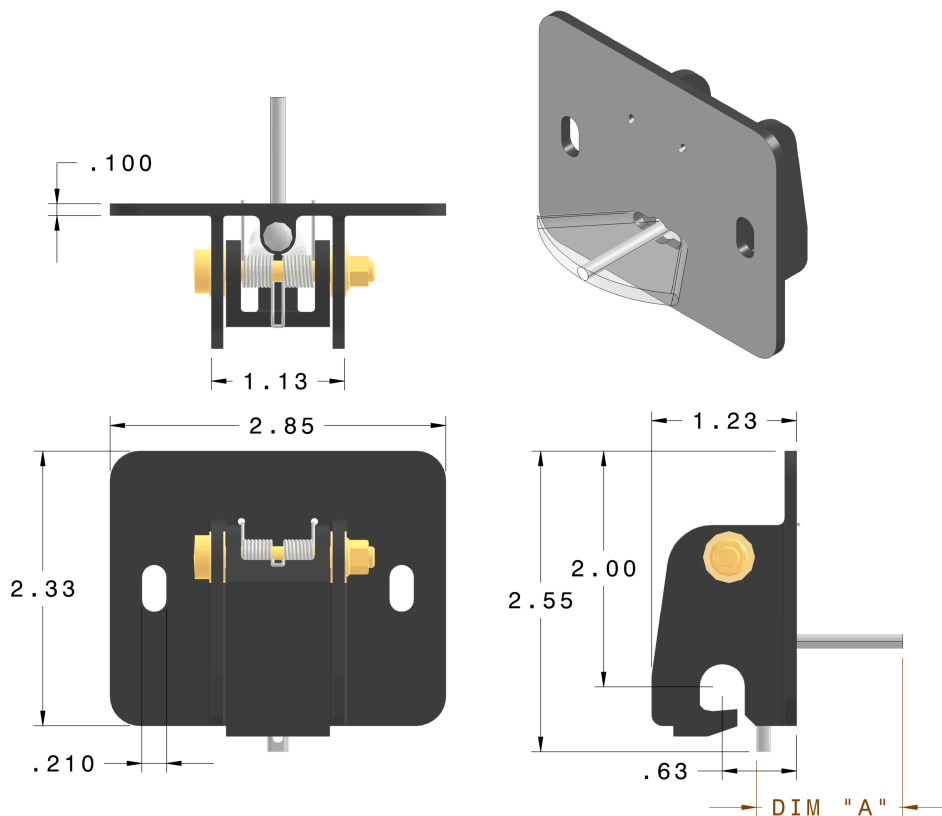
Part Number	"A"
JMIH-130-201-351	1.25"
JMIH-130-201-353	1.50"
JMIH-130-201-355	2.13"
JMIH-130-201-357	3.00"
JMIH-130-201-359	5.00"

Note: JMIH-130-201-XXX Hooks Are Designed to Work With JMIH-130-201-XXX Strikes.

[Back To INDEX](#)



**Quick Release Latch - Hook Assembly, Pivot Mechanism, High
Release Rod Height, Rect. Base, 2 Bolt Pattern**



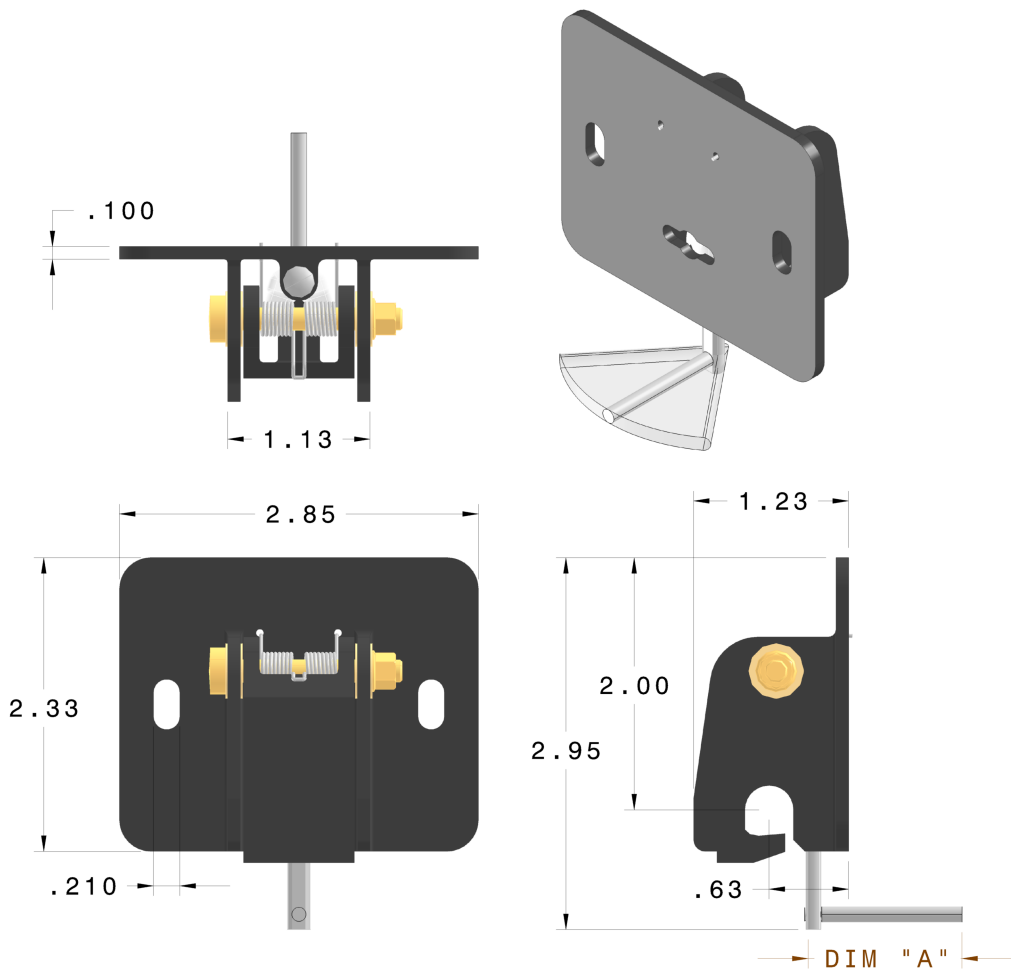
Part Number	"A"
JMIH-130-201-352	1.25"
JMIH-130-201-354	1.50"
JMIH-130-201-356	2.13"
JMIH-130-201-358	3.00"
JMIH-130-201-360	5.00"

Note: JMIH-130-201-XXX Hooks Are Designed to
Work With JMIH-130-201-XXX Strikes.

[Back To INDEX](#)



Quick Release Latch - Hook Assembly, Pivot Mechanism, Low Release Rod Height, Rect. Base, 2 Bolt Pattern



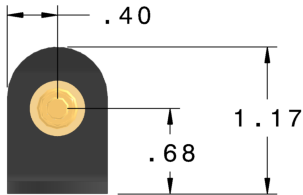
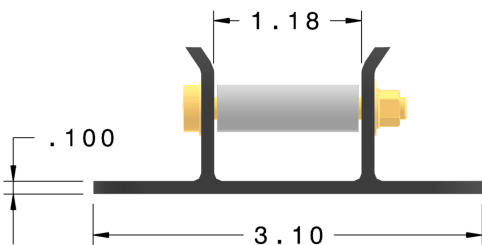
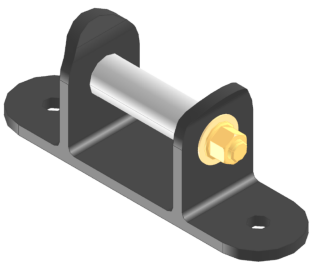
Part Number	"A"
JMIH-130-201-371	1.25"
JMIH-130-201-373	1.50"
JMIH-130-201-375	2.13"
JMIH-130-201-377	3.00"
JMIH-130-201-379	5.00"

Note: JMIH-130-201-XXX Hooks Are Designed to Work With JMIH-130-201-XXX Strikes.

[Back To INDEX](#)



**Quick Release Latch - Strike Base Assembly, Standard Height, Rect.
Base, 2 Bolt Pattern**



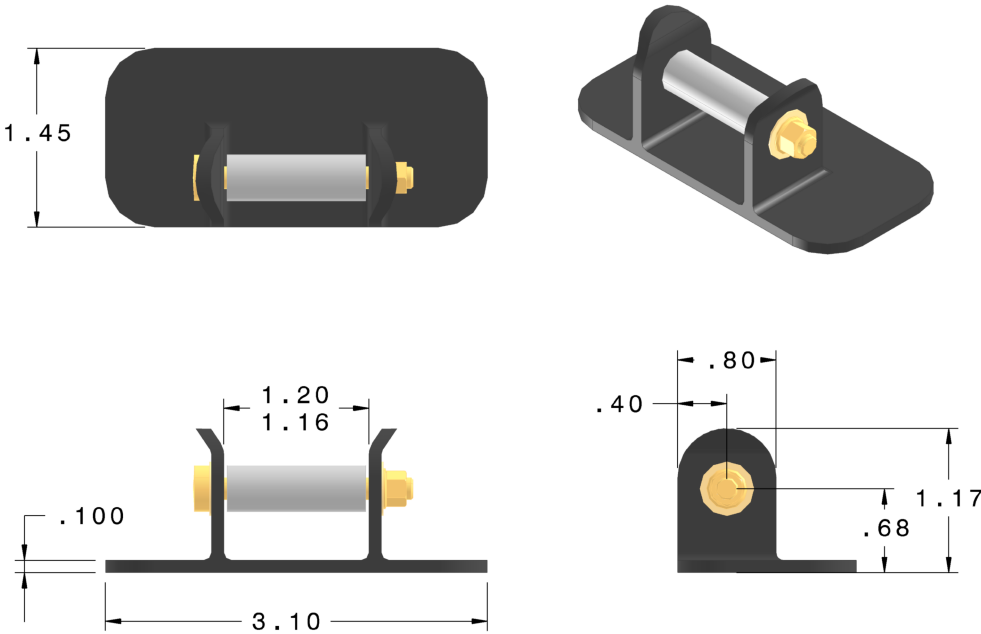
Part Number	"A"
JMIH-130-201-101	Ø.194 - .199
JMIH-130-201-105	Ø.250 - .254

[Back To INDEX](#)





Quick Release Latch - Strike Base Assembly, Standard Height, Wide Rect. Base, No Holes



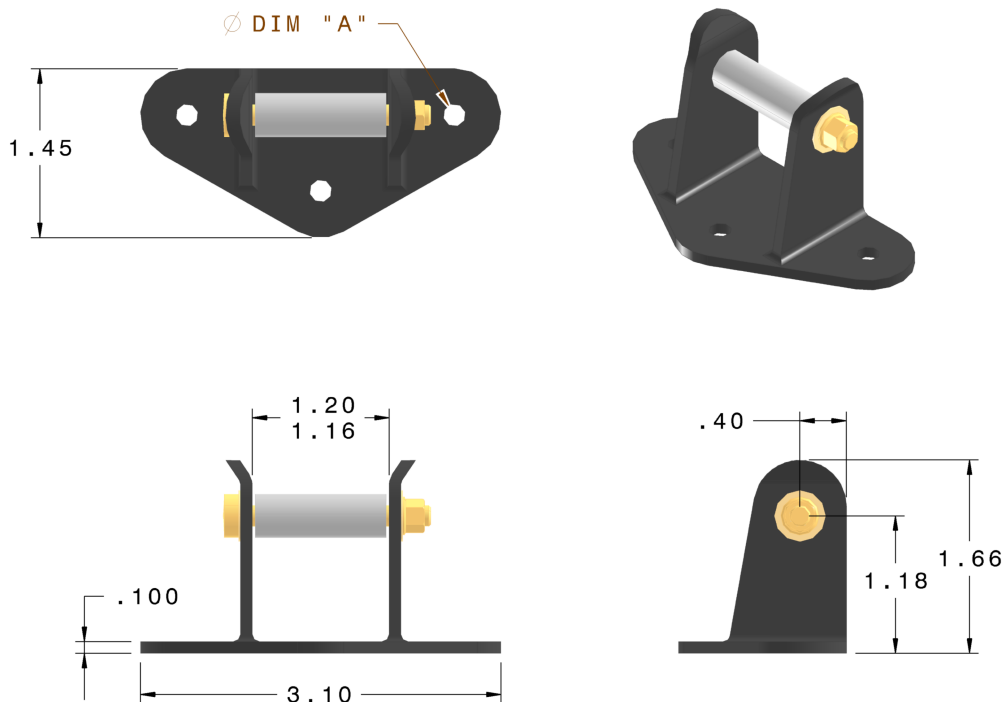
Part Number
JMIH-130-201-103

[Back To INDEX](#)





**Quick Release Latch - Strike Base Assembly, Tall Height, Triangle
Base, 3 Bolt Pattern**



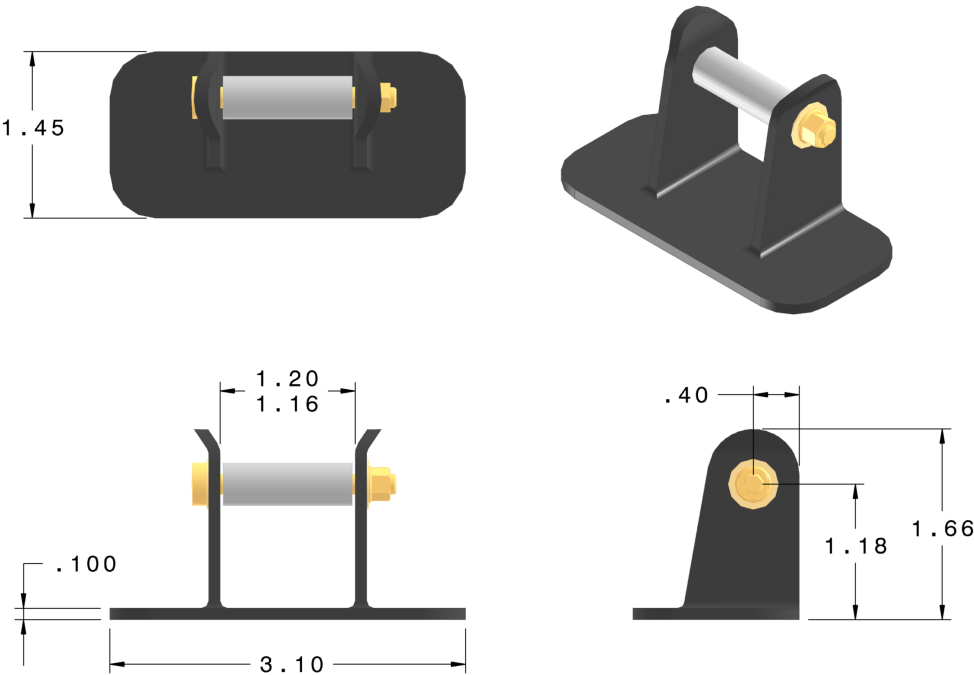
Part Number	"A"
JMIH-130-201-151	Ø.194 - .199
JMIH-130-201-155	Ø.250 - .254

[Back To INDEX](#)





**Quick Release Latch - Strike Base Assembly, Tall Height, Wide Rect.
Base, No Holes**



Part Number

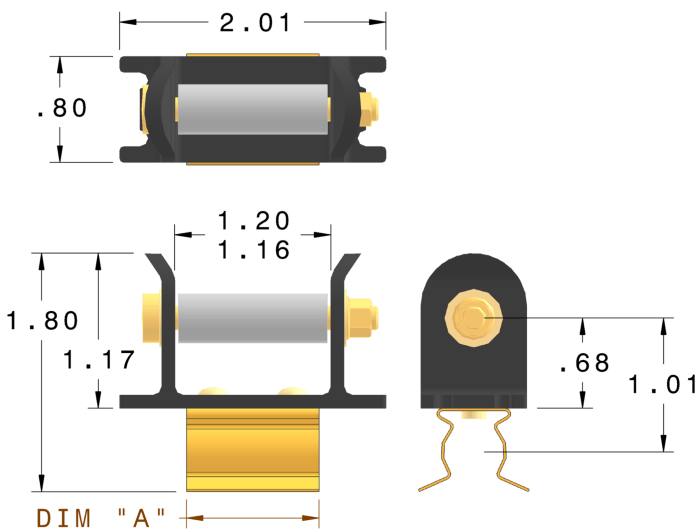
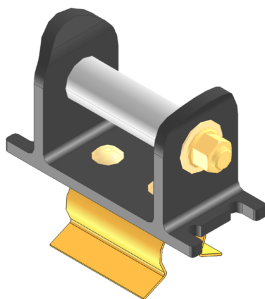
JMIH-130-201-153

[Back To INDEX](#)



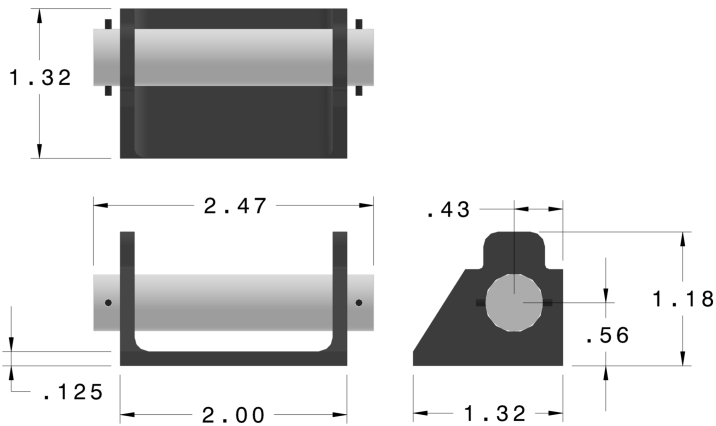
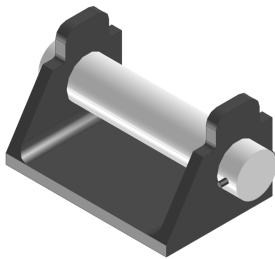


Quick Release Latch - Strike Base Assembly, With Spring Clip



Part Number	"A"
JMIH-130-201-201	.40"
JMIH-130-201-203	.80"
JMIH-130-201-205	1.00"
JMIH-130-201-207	1.20"

Quick Release Latch - Roller Base Assembly, For Spring Clip, No Holes



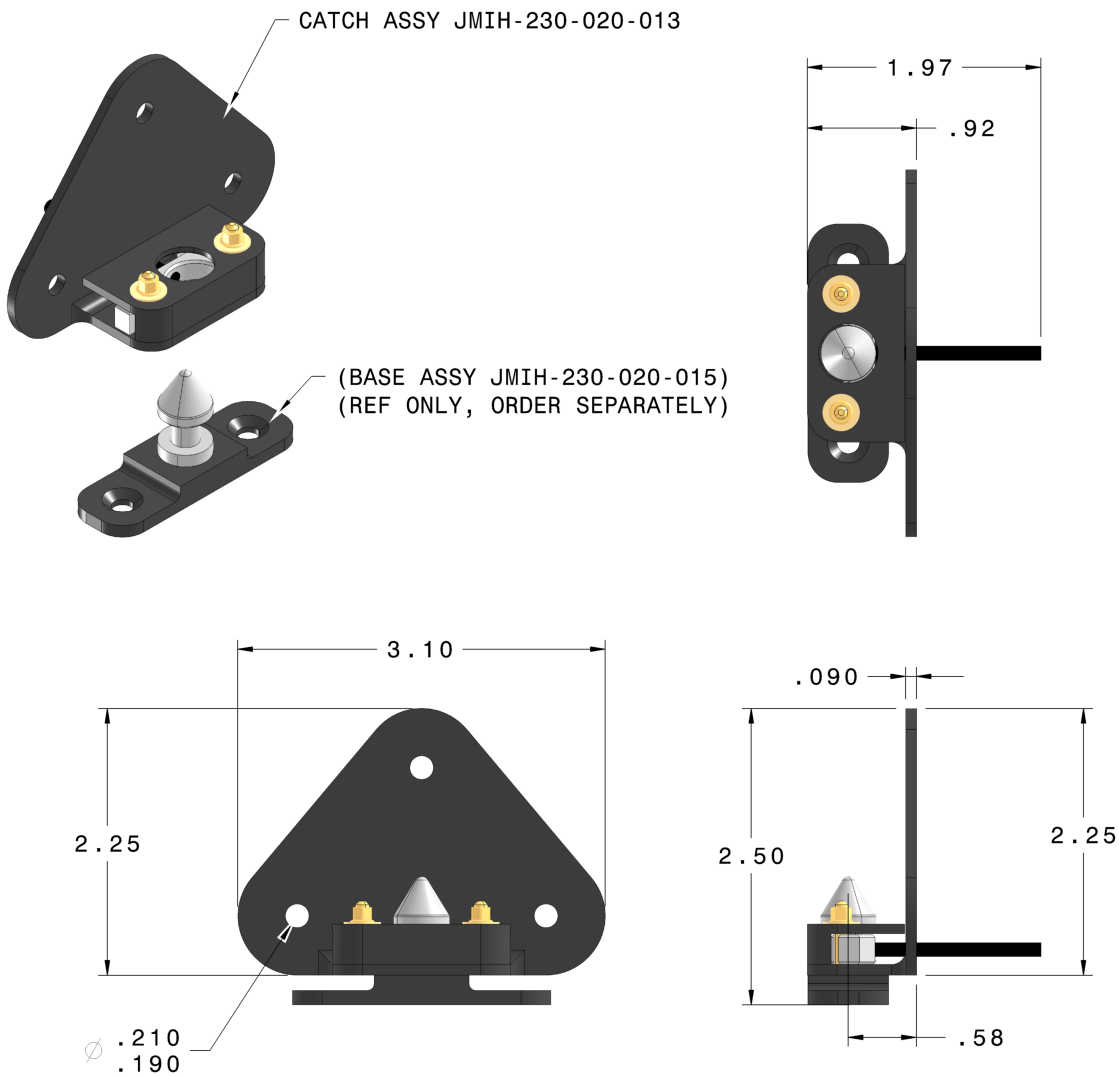
Part Number
JMIH-130-201-251

[Back To INDEX](#)





**Credit Card Latch - Catch Assembly, Structure to Panel, Triangle Base,
3 Bolt Pattern**



Part Number

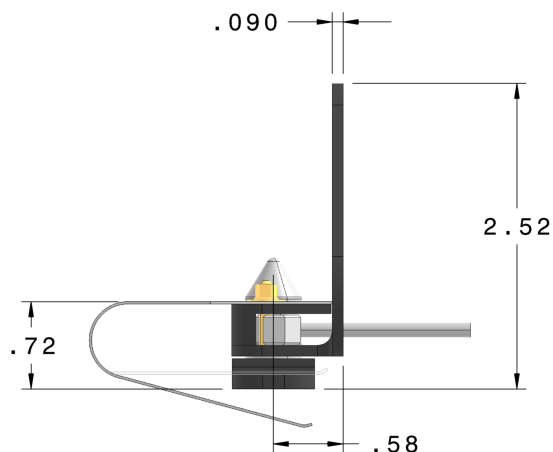
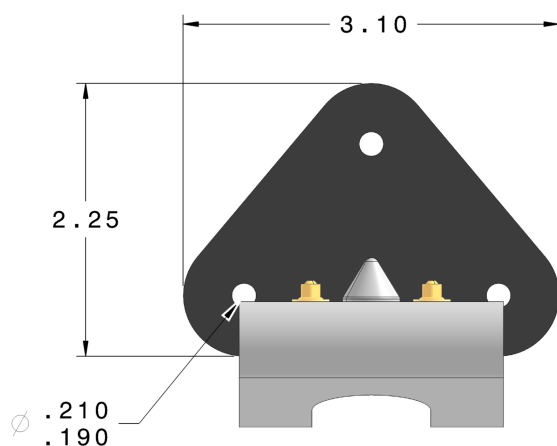
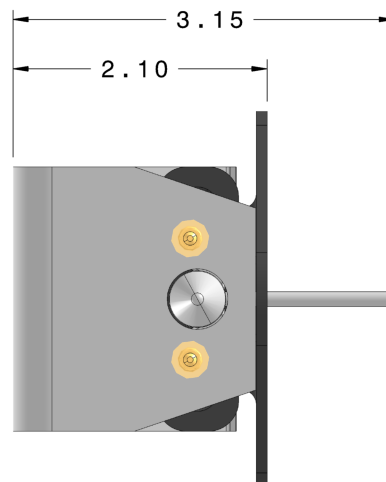
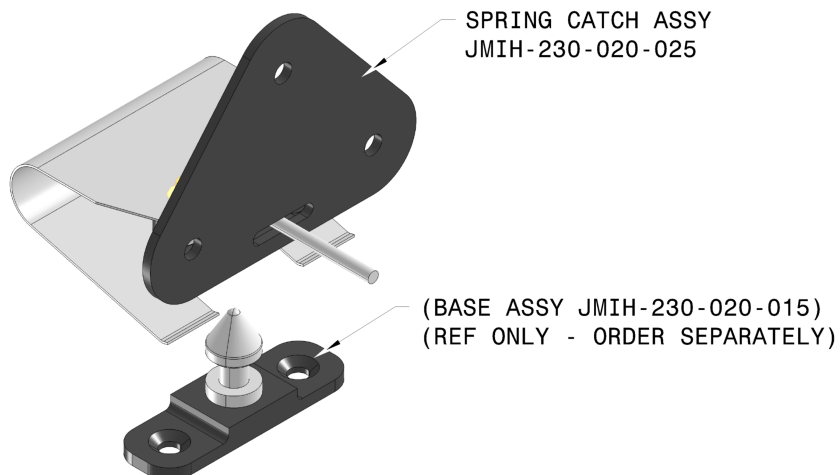
JMIH-230-020-013

[Back To INDEX](#)





Credit Card Latch - Catch Assembly, Structure to Panel, Triangle Base, 3 Bolt Pattern, Pre-Load Spring



Part Number

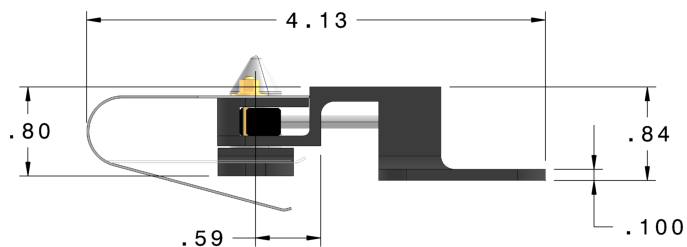
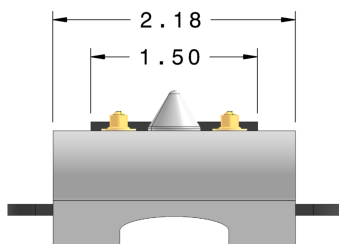
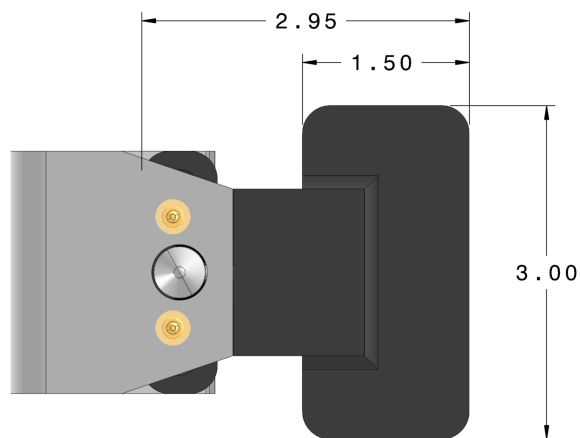
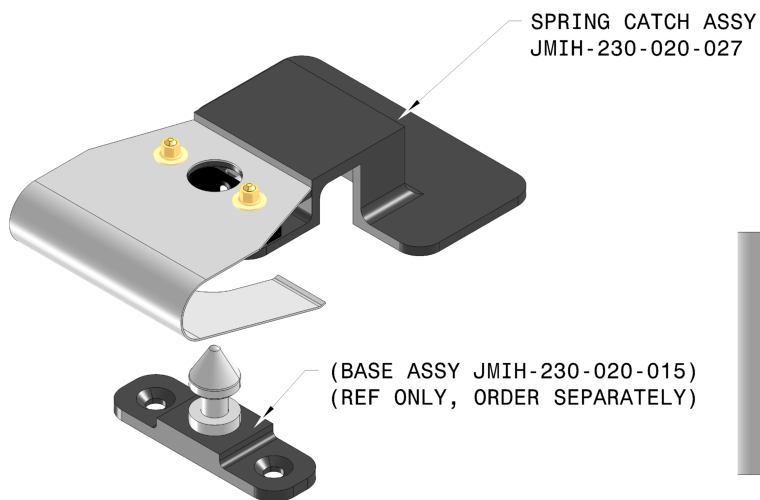
JMIH-230-020-025

[Back To INDEX](#)





**Credit Card Latch - Catch Assembly, Panel to Panel, Rect. Base, No
Holes, 0.03" Offset, Pre-Load Spring**



Part Number

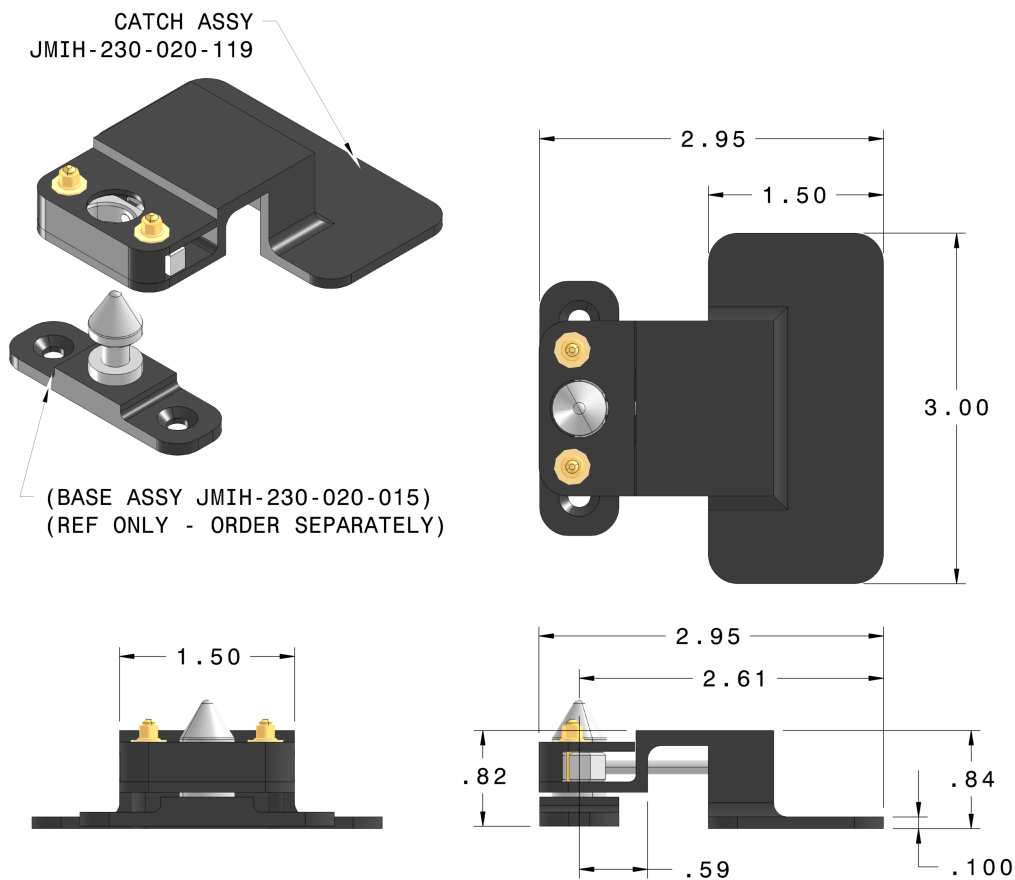
JMIH-230-020-027

[Back To INDEX](#)





Credit Card Latch - Catch Assembly, Panel to Panel, Rect. Base, No Holes, 0.03" Offset,



Part Number

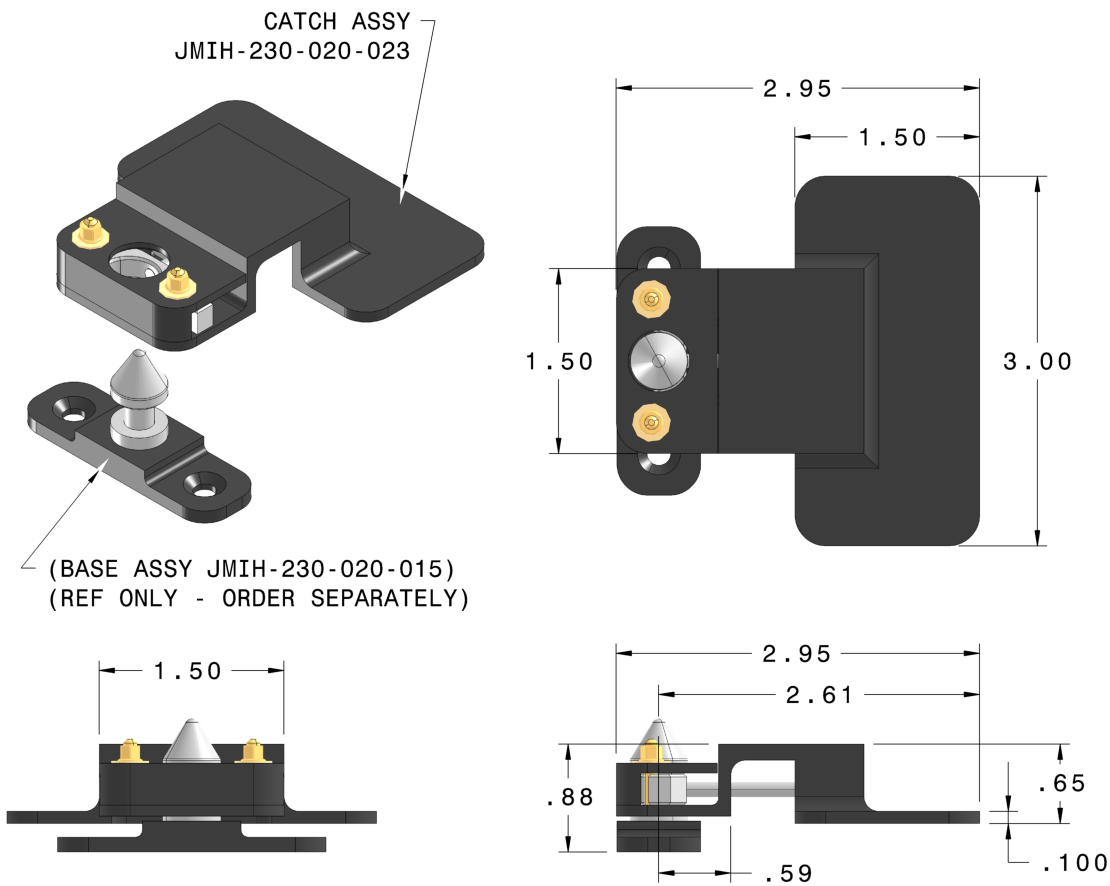
JMIH-230-020-019

[Back To INDEX](#)





**Credit Card Latch - Catch Assembly, Panel to Panel, Rect. Base, No
Holes, 0.17” Offset,**



Part Number

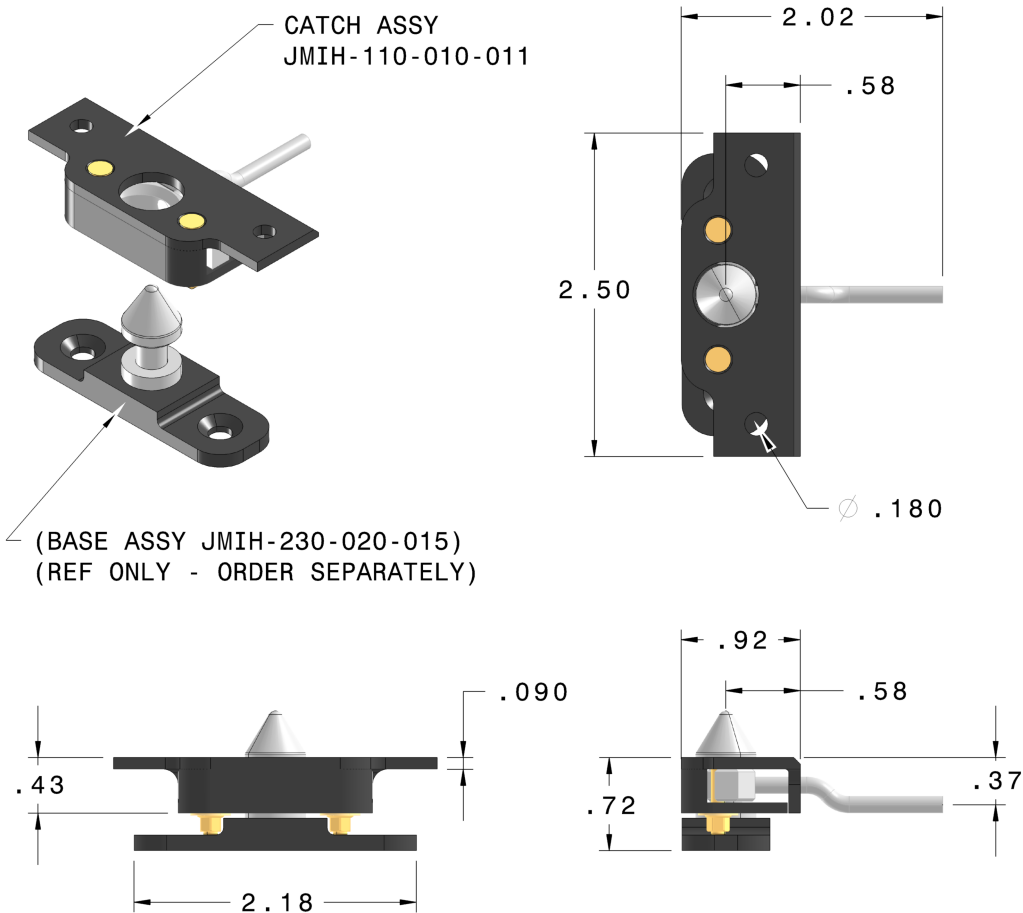
JMIH-230-020-023

[Back To INDEX](#)





**Credit Card Latch - Catch Assembly, Structure to Panel, Joggle Rod,
Rect. Base, 2 Bolt Pattern**



Part Number

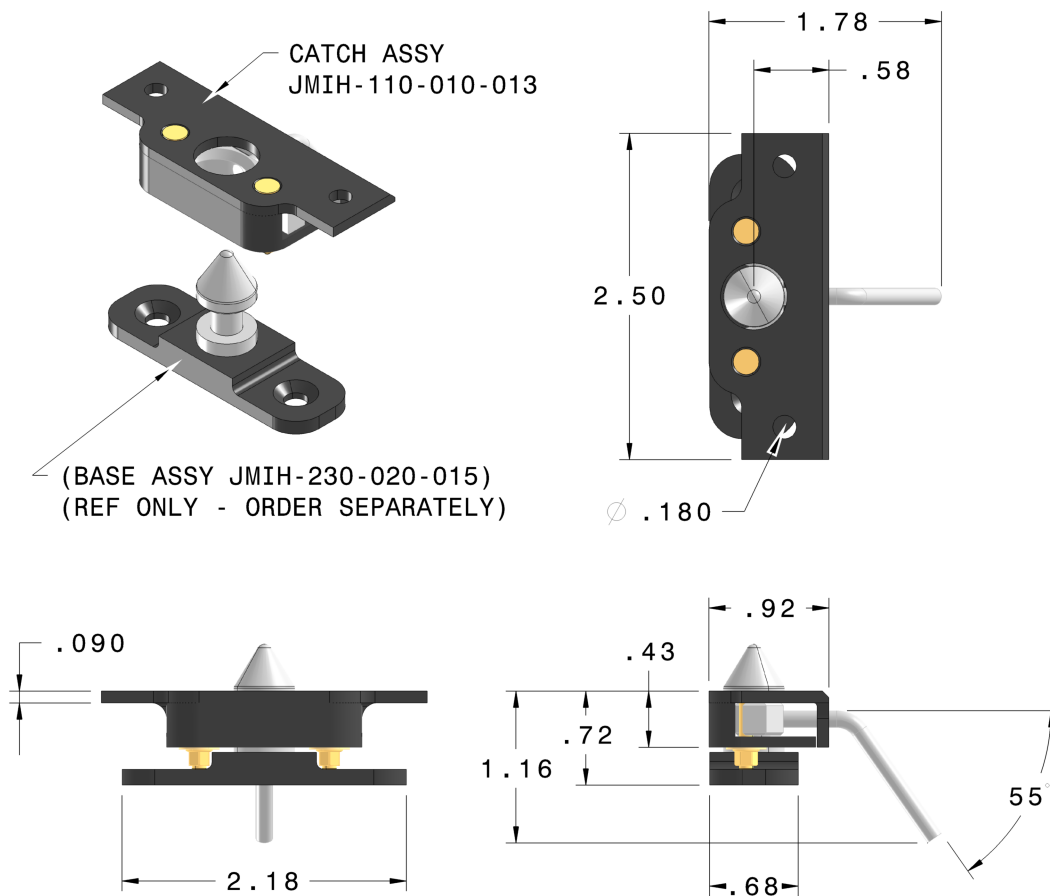
JMIH-110-010-011

[Back To INDEX](#)





**Credit Card Latch - Catch Assembly, Structure to Panel, Angled Rod,
Rect. Base, 2 Bolt Pattern**



Part Number

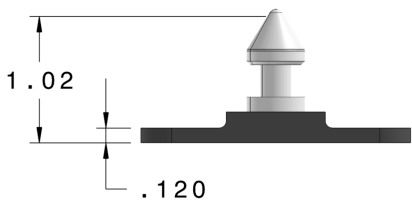
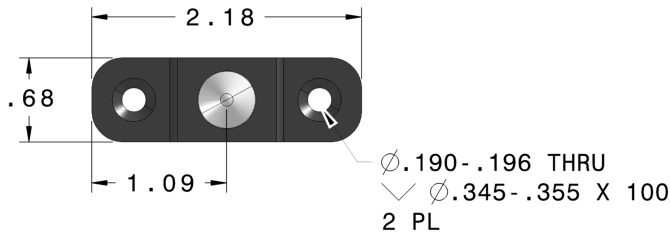
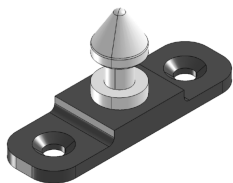
JMIH-110-010-013

[Back To INDEX](#)





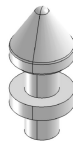
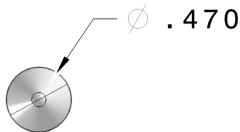
Credit Card Latch - Base Assembly, Rect. Base, 2 Bolt Pattern



Part Number

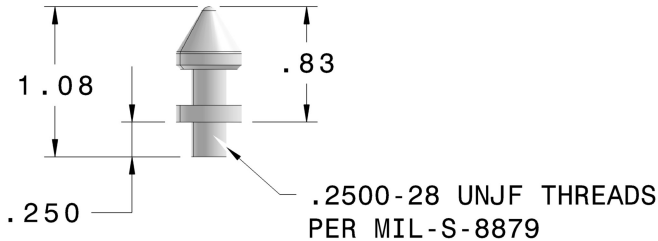
JMIH-230-020-015

Catch



Part Number

JMIH-230-020-107



[Back To INDEX](#)





CONTACT INFORMATION

SUSAN WALL

JORMAC AEROSPACE

11221 69th Street North
Largo, FL 33773-5504 USA

Tel: 727-549-9600 ext 2247

Fax: 727-549-1401

Email: Susan.Wall@Jormac.com

WWW.JORMAC.COM

PATRICIA BARTLETT

JORMAC AEROSPACE

11221 69th Street North
Largo, FL 33773-5504 USA

Tel: 727-549-9600 ext 2228

Fax: 727-549-1401

Email: Patricia.Bartlett@Jormac.com

WWW.JORMAC.COM